



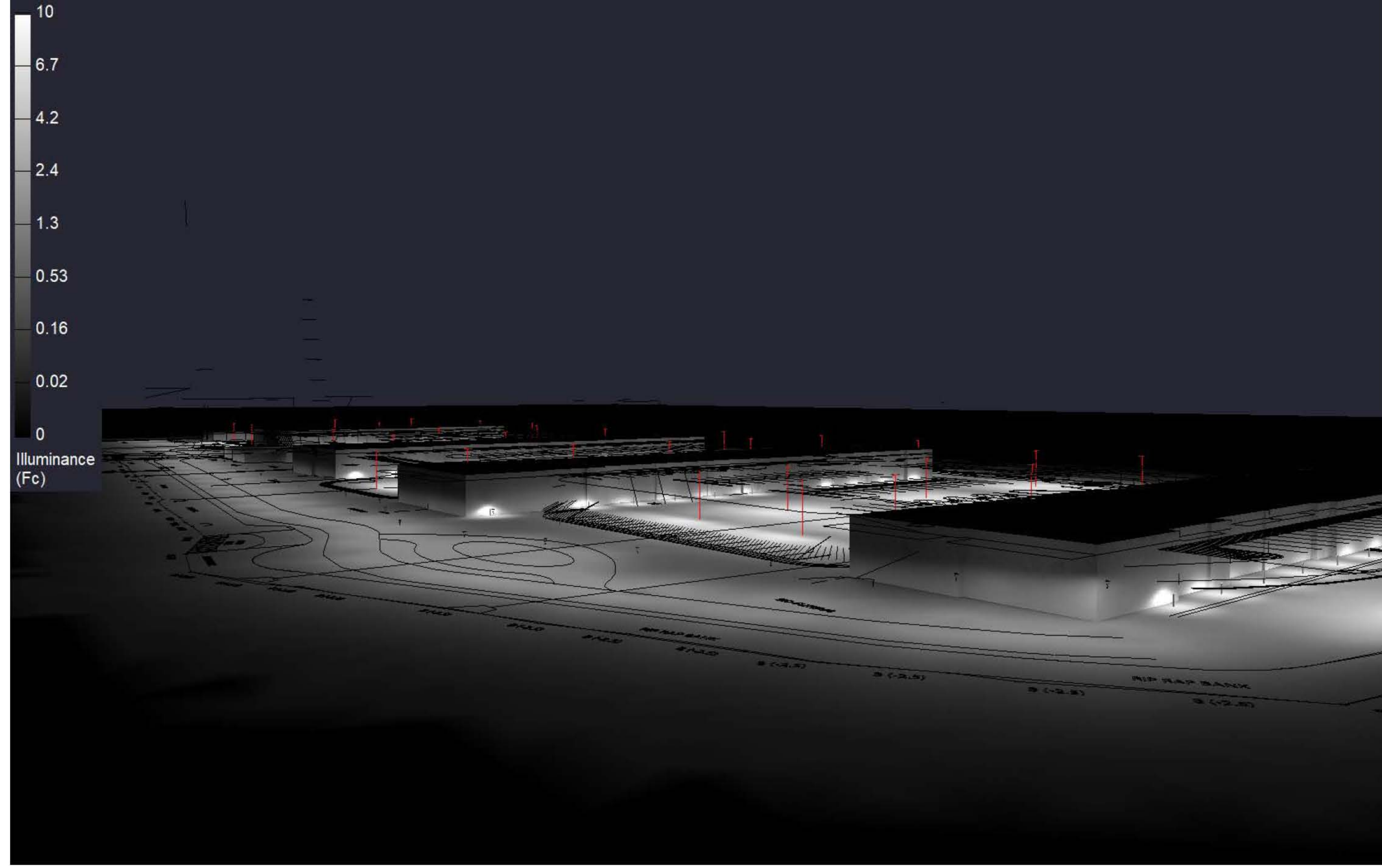
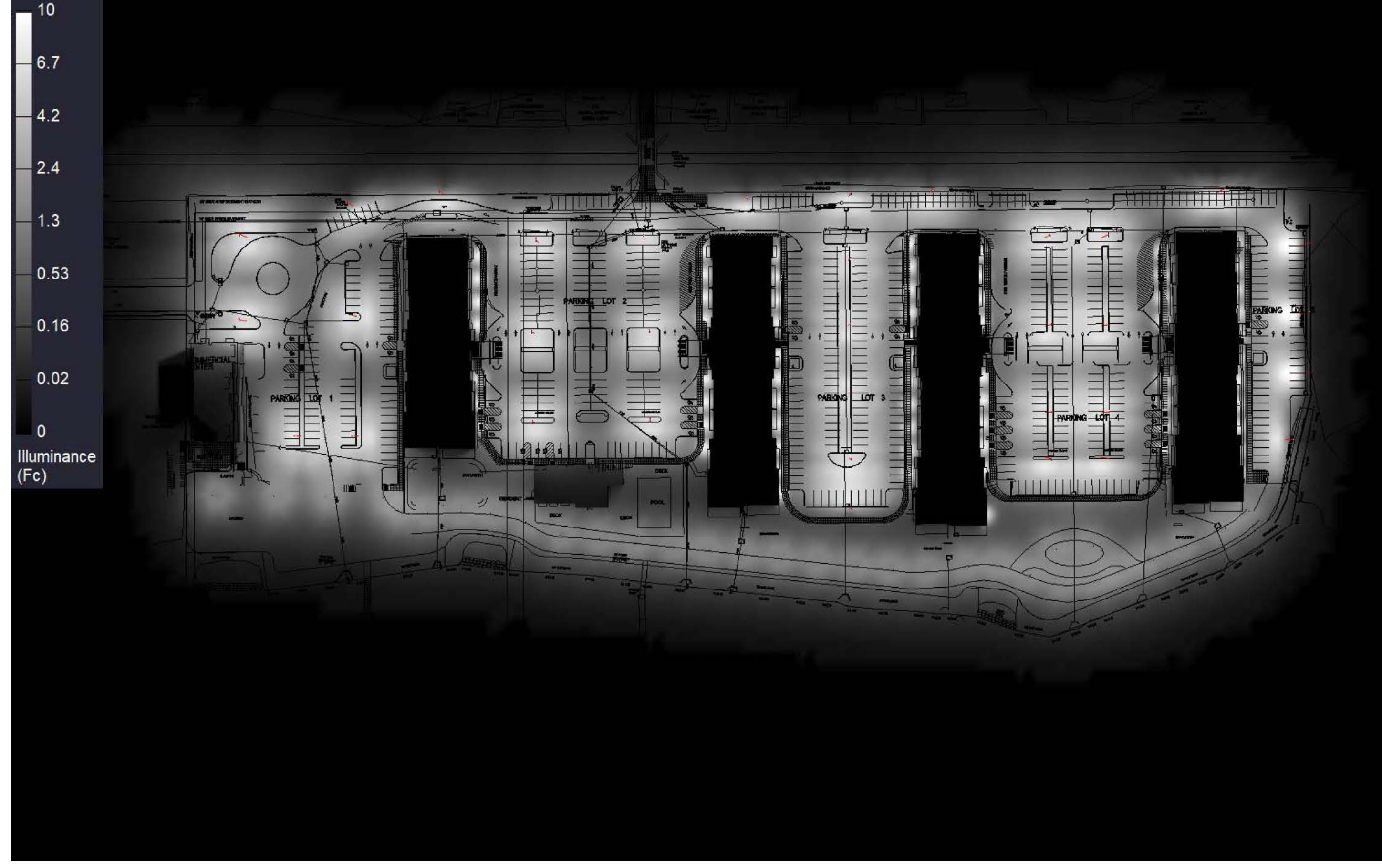
EAGLE BAY MIXED USE DEVELOPMENT  
SITE PLAN PRESENTATION

Section III: Lighting

TOWN OF STONY POINT, NY  
OCTOBER 22, 2020







**RAB**  
 170 Ludlow Avenue, Northvale, NJ 07647  
 888 722-1000 • rablighting.com

Prepared For:  
 Damin Sales  
 28 Brunswick Avenue  
 Edison, NJ 08818-0377  
 Tel: 732-965-8866

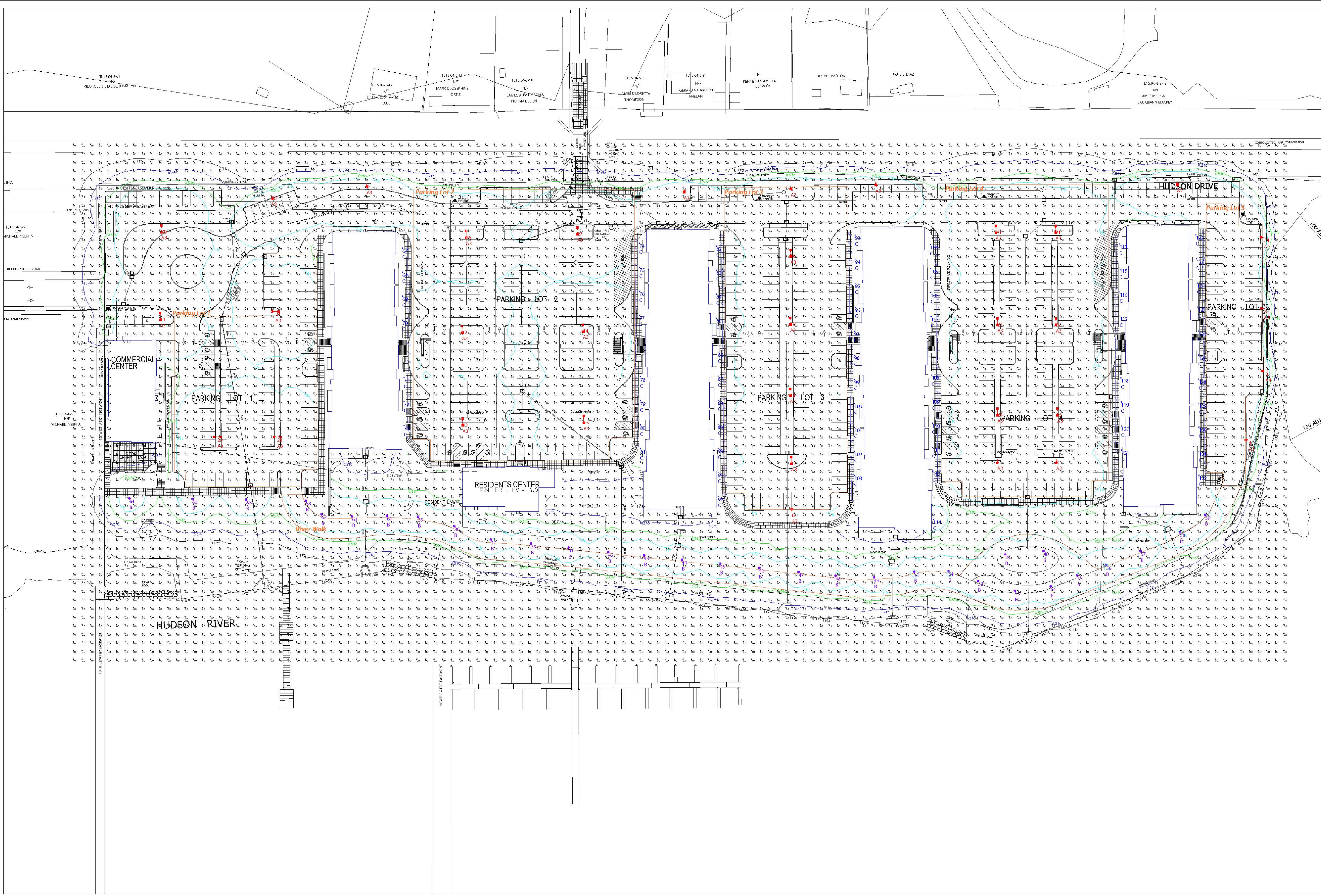
Job Name:  
 Eagle Bay  
 Story Point, NY  
 Lighting Layout  
 Version C

Scale: as noted  
 Date: 1/7/2020  
 Filename: Eagle Bay Lig Layout\_285996C.AGI  
 Drawn By: dvento

The Lighting Analysis, as well as Energy Analysis and/or Visual Simulation ("Lighting Design") provided by RAB Lighting, Inc. ("RAB") represents an anticipated prediction of lighting system performance based upon design parameters and information supplied by others. These design parameters and information provided by others have not been independently verified by RAB. RAB does not warrant, represent, or certify the accuracy of the Lighting Design or RAB's recommendations. The Lighting Design and other information be filed verified to reduce or avoid. RAB's responsibility is limited to the design of the lighting system. RAB's Lighting Design and other information is provided as a service to its clients and is not intended to be used for any other purpose. RAB's Lighting Design and other information is provided as a service to its clients and is not intended to be used for any other purpose. RAB's Lighting Design and other information is provided as a service to its clients and is not intended to be used for any other purpose.

Filename: \\rab-storage-1\Lighting Design\Job Files\ Specification Projects\Damin Sales\Edison Sales\_105354\agle Bay\Working Files\AGI\Eagle Bay Lig Layout\_285996C.AGI





Scale: 1 inch= 50 Ft.

The Lighting Analysis, and/or Energy Analysis and/or Visual Simulation ("Lighting Design") provided by RAB Lighting Inc. ("RAB") represents an anticipated prediction of lighting system performance based upon design parameters and information supplied by others. These design parameters and information provided by others may vary from actual conditions and performance. RAB makes no warranty, representation, or guarantee, expressed or implied, as to the accuracy, completeness, or suitability of the Lighting Design for any purpose other than that for which it was created and is not intended to be relied upon in connection with any project. RAB Lighting Inc. is not responsible for construction not as being part of a project's construction documentation package.

Scale: as noted  
 Date: 7/7/2020  
 File name: Eagle Bay Litg Layout.285936C.AGI  
 Drawn By: dlvrento

Job Name:  
 Eagle Bay  
 Story Point, NY  
 Lighting Layout  
 Version C

Prepared For:  
 Damin Sales  
 28 Brunswick Avenue  
 Edison, NJ 08818-0377  
 Tel: 732-965-8866



Filename: \\rab-storage-1\Lighting Design\Lab Files\Specification Projects\Damin Sales\Edison Sales\105354\egle bay\Working Files\AGI\Eagle Bay Litg Layout.285936C.AGI





LEFT TURN AND OTHER VEH. MANEUVERING SPACE  
SIGN FOR FIRE LANES  
SEPARATION 100 FT.  
(4)



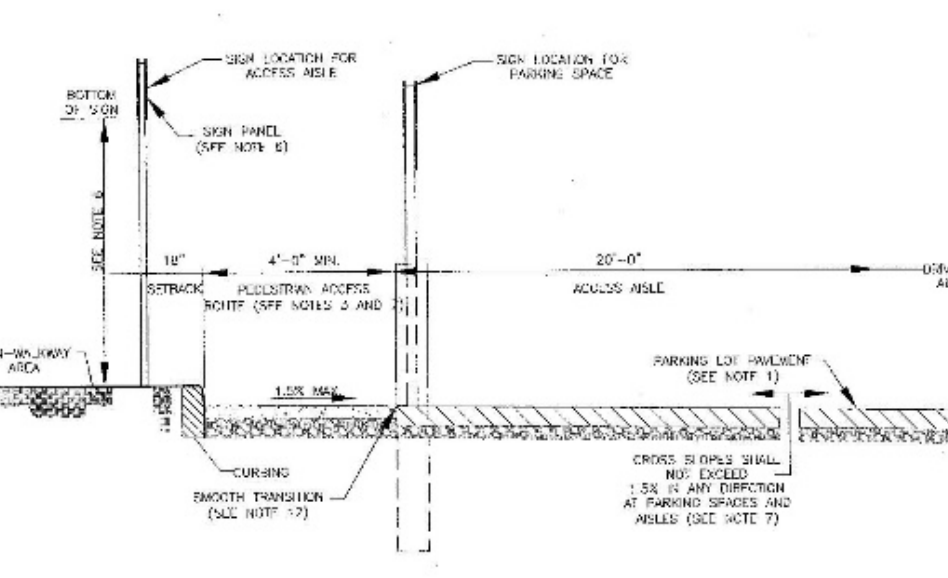
1" FINISHING AND BORING TO BE MATCHED TO NEXT SHEET  
100% ADJUSTED PER P-1  
SIGN FOR NO PARKING ZONE  
(2)



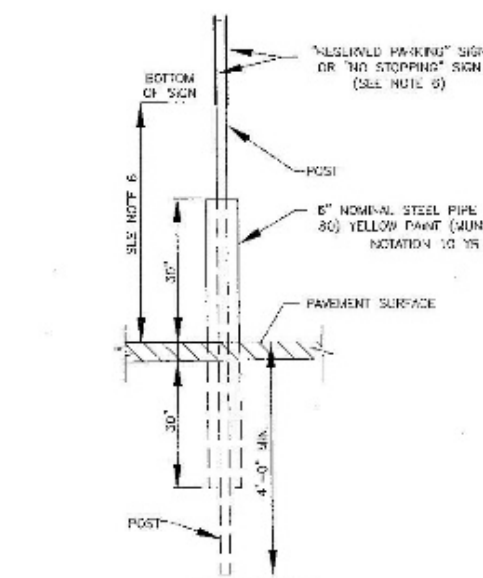
STOP SIGN DETAIL  
(1)

**LEGEND**

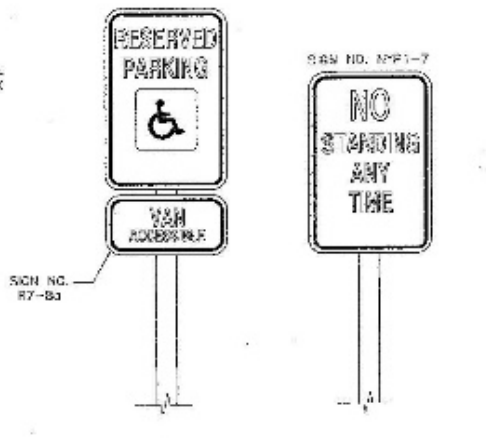
---	EXISTING 1" CONTOUR	---	PROPOSED 1" CONTOUR
---	EXISTING 2" CONTOUR	---	PROPOSED 2" CONTOUR
---	EXISTING 3" CONTOUR	---	PROPOSED 3" CONTOUR
---	EXISTING WATER MAIN	---	PROPOSED WATER MAIN
---	EXISTING WATER VALVE	---	PROPOSED WATER VALVE
---	EXISTING FIRE HYDRANT	---	PROPOSED FIRE HYDRANT
---	EXISTING GAS LINE	---	PROPOSED GAS SERVICE
---	EXISTING GAS VALVE	---	PROPOSED GAS VALVE
---	EXISTING GATCH GASH	---	PROPOSED GATCH GASH
---	EXISTING SEWER DRAIN LINE	---	PROPOSED SEWER DRAIN LINE
---	EXISTING SEWER MANHOLE	---	PROPOSED SEWER CLEANOUT
---	EXISTING SEWER LINE	---	PROPOSED SEWER HOUSE CONNECTION
---	EXISTING SPOT ELEVATION	---	PROPOSED SPOT ELEVATION
---	EXISTING STORM DRAIN	---	PROPOSED STORM DRAIN
---	EXISTING STORM MANHOLE	---	PROPOSED STORM MANHOLE
---	EXISTING FENCE	---	PROPOSED FENCE
---	EXISTING SIGN	---	PROPOSED SIGN
---	EXISTING DRIVE	---	PROPOSED DRIVE
---	EXISTING DOWN DRAIN	---	PROPOSED DOWN DRAIN
---	EXISTING SCOUR LINE	---	PROPOSED SCOUR LINE
---	EXISTING WATER MAIN	---	PROPOSED WATER MAIN
---	EXISTING DRY WATER	---	PROPOSED DRY WATER



TYPICAL SECTION (SECTION A-A) DETAIL  
N.T.S.



POST BASE DETAIL (SEE NOTE 6)  
N.T.S.

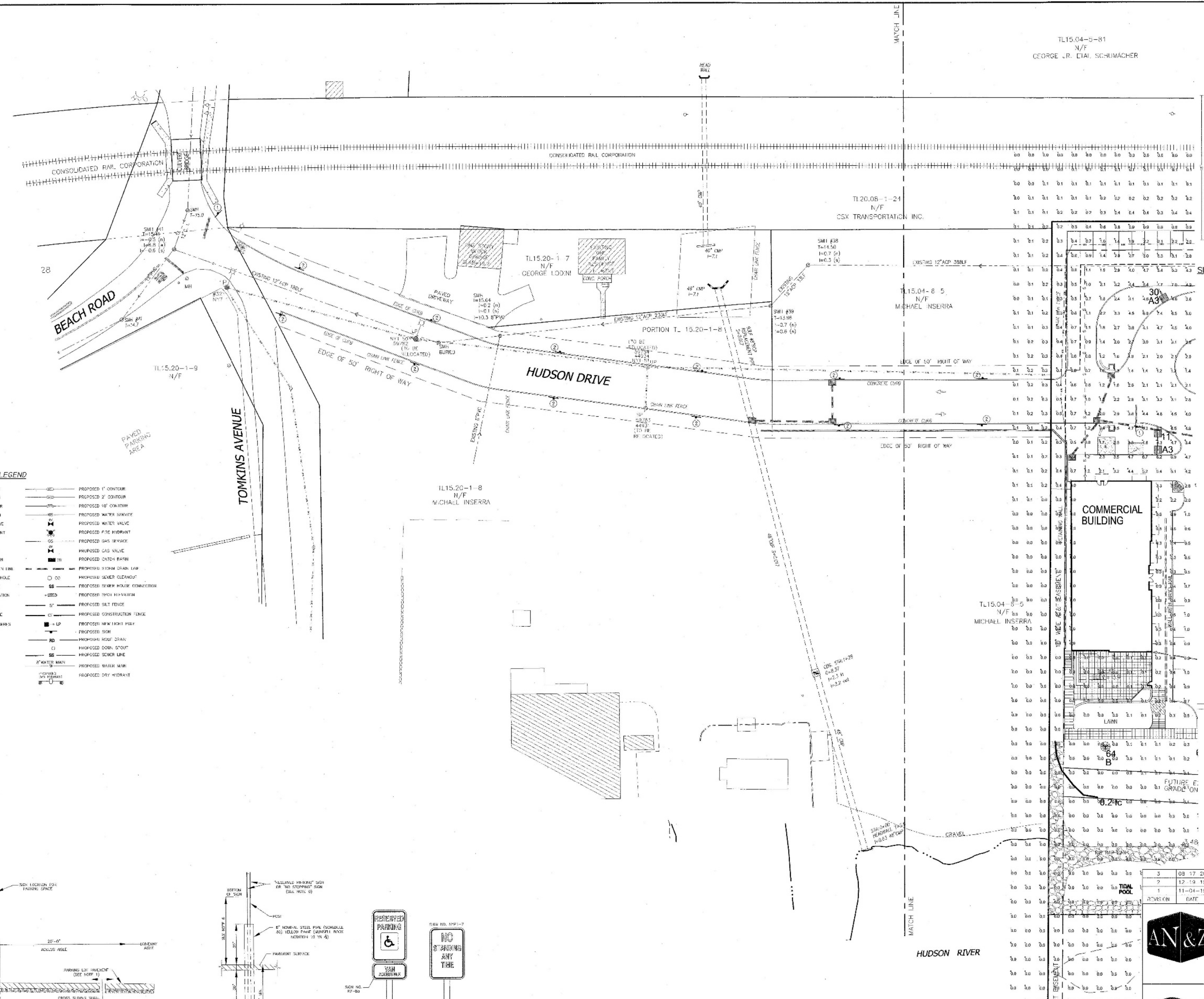


TYPICAL PARKING SPACE & PARKING ASILE SIGN DETAIL  
N.T.S.  
(3)

**NOTES**

- THIS SHEET IS INTENDED TO SUPPLY THE DIMENSIONS AND REQUIREMENTS OF TYPICAL SIGNPOSTS, SIGN PANELS, AND SIGNAGE MATERIALS. ALL DIMENSIONS SHALL BE AS SHOWN UNLESS OTHERWISE SPECIFIED.
- MINIMUM SIGNAGE REQUIREMENTS SHALL BE AS SHOWN UNLESS OTHERWISE SPECIFIED.
- CONTRACTOR SHALL VERIFY ALL DIMENSIONS AND REQUIREMENTS OF TYPICAL SIGNPOSTS, SIGN PANELS, AND SIGNAGE MATERIALS. ALL DIMENSIONS SHALL BE AS SHOWN UNLESS OTHERWISE SPECIFIED.
- CONTRACTOR SHALL VERIFY ALL DIMENSIONS AND REQUIREMENTS OF TYPICAL SIGNPOSTS, SIGN PANELS, AND SIGNAGE MATERIALS. ALL DIMENSIONS SHALL BE AS SHOWN UNLESS OTHERWISE SPECIFIED.
- CONTRACTOR SHALL VERIFY ALL DIMENSIONS AND REQUIREMENTS OF TYPICAL SIGNPOSTS, SIGN PANELS, AND SIGNAGE MATERIALS. ALL DIMENSIONS SHALL BE AS SHOWN UNLESS OTHERWISE SPECIFIED.
- CONTRACTOR SHALL VERIFY ALL DIMENSIONS AND REQUIREMENTS OF TYPICAL SIGNPOSTS, SIGN PANELS, AND SIGNAGE MATERIALS. ALL DIMENSIONS SHALL BE AS SHOWN UNLESS OTHERWISE SPECIFIED.
- CONTRACTOR SHALL VERIFY ALL DIMENSIONS AND REQUIREMENTS OF TYPICAL SIGNPOSTS, SIGN PANELS, AND SIGNAGE MATERIALS. ALL DIMENSIONS SHALL BE AS SHOWN UNLESS OTHERWISE SPECIFIED.
- CONTRACTOR SHALL VERIFY ALL DIMENSIONS AND REQUIREMENTS OF TYPICAL SIGNPOSTS, SIGN PANELS, AND SIGNAGE MATERIALS. ALL DIMENSIONS SHALL BE AS SHOWN UNLESS OTHERWISE SPECIFIED.
- CONTRACTOR SHALL VERIFY ALL DIMENSIONS AND REQUIREMENTS OF TYPICAL SIGNPOSTS, SIGN PANELS, AND SIGNAGE MATERIALS. ALL DIMENSIONS SHALL BE AS SHOWN UNLESS OTHERWISE SPECIFIED.
- CONTRACTOR SHALL VERIFY ALL DIMENSIONS AND REQUIREMENTS OF TYPICAL SIGNPOSTS, SIGN PANELS, AND SIGNAGE MATERIALS. ALL DIMENSIONS SHALL BE AS SHOWN UNLESS OTHERWISE SPECIFIED.
- CONTRACTOR SHALL VERIFY ALL DIMENSIONS AND REQUIREMENTS OF TYPICAL SIGNPOSTS, SIGN PANELS, AND SIGNAGE MATERIALS. ALL DIMENSIONS SHALL BE AS SHOWN UNLESS OTHERWISE SPECIFIED.
- CONTRACTOR SHALL VERIFY ALL DIMENSIONS AND REQUIREMENTS OF TYPICAL SIGNPOSTS, SIGN PANELS, AND SIGNAGE MATERIALS. ALL DIMENSIONS SHALL BE AS SHOWN UNLESS OTHERWISE SPECIFIED.
- CONTRACTOR SHALL VERIFY ALL DIMENSIONS AND REQUIREMENTS OF TYPICAL SIGNPOSTS, SIGN PANELS, AND SIGNAGE MATERIALS. ALL DIMENSIONS SHALL BE AS SHOWN UNLESS OTHERWISE SPECIFIED.
- CONTRACTOR SHALL VERIFY ALL DIMENSIONS AND REQUIREMENTS OF TYPICAL SIGNPOSTS, SIGN PANELS, AND SIGNAGE MATERIALS. ALL DIMENSIONS SHALL BE AS SHOWN UNLESS OTHERWISE SPECIFIED.
- CONTRACTOR SHALL VERIFY ALL DIMENSIONS AND REQUIREMENTS OF TYPICAL SIGNPOSTS, SIGN PANELS, AND SIGNAGE MATERIALS. ALL DIMENSIONS SHALL BE AS SHOWN UNLESS OTHERWISE SPECIFIED.

PROVIDER: HANSEN ARCHITECTS ON THE PREMISES OF THE...  
CONTRACTOR SHALL VERIFY ALL DIMENSIONS AND REQUIREMENTS OF TYPICAL SIGNPOSTS, SIGN PANELS, AND SIGNAGE MATERIALS. ALL DIMENSIONS SHALL BE AS SHOWN UNLESS OTHERWISE SPECIFIED.



3 08 17 20 SITE PLAN PREPARED FOR REVIEW  
2 12 19 15 P.S. SUBMISSION  
1 11 04 19 WATER MAIN & CONTOURS NEAR RAILROAD  
DATE DESCRIPTION

**ATZL, NASHER & ZIGLER P.C.**  
ENGINEERS-SURVEYORS-PLANNERS  
232 North Main Street  
New City, New York 10956  
Tel: (845) 634-4884  
Fax: (845) 634-5543  
E-mail: info@atnz.com  
Web: www.atnz.com

**Design Development, pllc**  
165 Mamaroneck Ave, Floor 2  
White Plains, NY 10601  
914.949.4278 f.

A DESIGN AND DEVELOPMENT  
CONSULTANCY

PROJECT: EAGLE BAY

TOWN OF STONY YORK  
ROCKLAND COUNTY, NEW YORK

LIGHTING AND TRAFFIC  
SIGNS PLAN  
HUDSON DRIVE

DRAWN BY: VC	CHECKED BY: DMZ
DATE: AUGUST 01, 2019	SCALE: 1 IN. = 30 FT.
PROJECT NO: 1407	DRAWING NO: LS-1

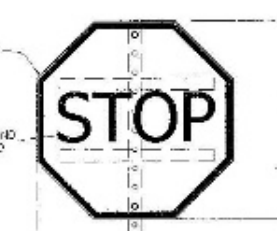
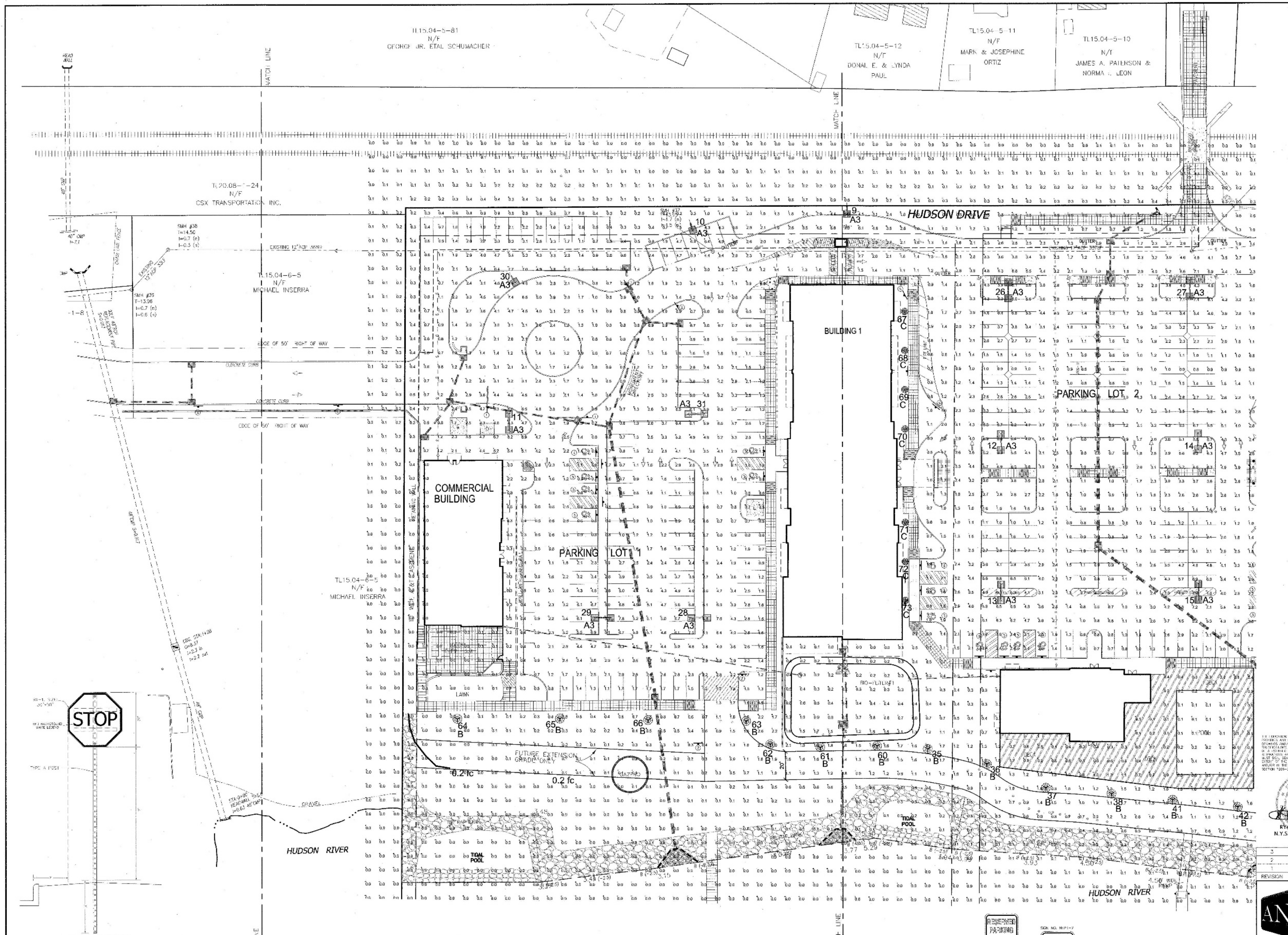
RYAN NASHER, P.E.  
N.Y.S. P.E. LIC. NO. 93606

JOHN R. ATZL, P.E.  
N.Y.S. P.E. LIC. NO. 10228

DIG SAFELY  
NEW YORK  
www.digsafely.com  
One Safety and One Chance Save Lives  
Use the Utility Locator Before You Dig. Safe Dig Sites. Dig Safely.  
• Dig Safely Before You Dig  
• Mark the Location, Time  
• Report the Status  
• Use the Code  
1-800-457-7862  
IT'S THE WAY!

THE DESIGNER OF THE WORK OF THIS PROJECT HAS BEEN LICENSED UNDER THE PROFESSIONAL ENGINEERING LAW OF THE STATE OF NEW YORK. THE DESIGNER HAS BEEN LICENSED UNDER THE PROFESSIONAL ENGINEERING LAW OF THE STATE OF NEW YORK. THE DESIGNER HAS BEEN LICENSED UNDER THE PROFESSIONAL ENGINEERING LAW OF THE STATE OF NEW YORK. THE DESIGNER HAS BEEN LICENSED UNDER THE PROFESSIONAL ENGINEERING LAW OF THE STATE OF NEW YORK.





STOP SIGN DETAIL  
N.T.S.  
(1)

**LEGEND**

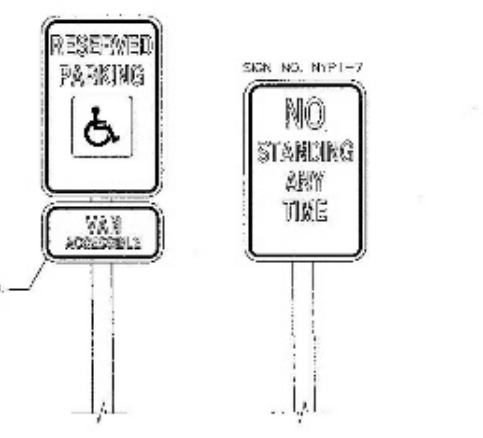
	EXISTING 1" CONTOUR		PROPOSED 1" CONTOUR
	EXISTING 2" CONTOUR		PROPOSED 2" CONTOUR
	EXISTING 4" CONTOUR		PROPOSED 4" CONTOUR
	EXISTING WATER MAIN		PROPOSED WATER MAIN
	EXISTING WATER VALVE		PROPOSED WATER VALVE
	EXISTING FIRE HYDRANT		PROPOSED FIRE HYDRANT
	EXISTING GAS LINE		PROPOSED GAS LINE
	EXISTING GAS VALVE		PROPOSED GAS VALVE
	EXISTING CATCH BASIN		PROPOSED CATCH BASIN
	EXISTING STORM DRAIN LINE		PROPOSED STORM DRAIN LINE
	EXISTING SEWER MAIN		PROPOSED SEWER MAIN
	EXISTING SEWER LINE		PROPOSED SEWER LINE
	EXISTING STORM WATER ELEVATION		PROPOSED STORM WATER ELEVATION
	EXISTING STREET LIGHT POLE		PROPOSED STREET LIGHT POLE
	EXISTING STORM WATER PIPE		PROPOSED STORM WATER PIPE
	EXISTING SEWER PIPE		PROPOSED SEWER PIPE
	EXISTING STORM WATER TANK		PROPOSED STORM WATER TANK
	EXISTING SEWER TANK		PROPOSED SEWER TANK
	EXISTING STORM WATER MAIN		PROPOSED STORM WATER MAIN
	PROPOSED STORM WATER MAIN		PROPOSED SEWER MAIN
	PROPOSED STORM WATER CONNECTION		PROPOSED STREET LIGHT POLE
	PROPOSED SPOT ELEVATION		PROPOSED STORM WATER TANK
	PROPOSED CURB		PROPOSED SEWER TANK
	PROPOSED SIDEWALK		PROPOSED STORM WATER CONNECTION
	PROPOSED STORM WATER TANK		PROPOSED CURB
	PROPOSED SEWER TANK		PROPOSED SIDEWALK
	PROPOSED STORM WATER CONNECTION		PROPOSED STORM WATER TANK
	PROPOSED CURB		PROPOSED SEWER TANK
	PROPOSED SIDEWALK		PROPOSED STORM WATER CONNECTION
	PROPOSED STORM WATER TANK		PROPOSED CURB
	PROPOSED SEWER TANK		PROPOSED SIDEWALK
	PROPOSED STORM WATER CONNECTION		PROPOSED STORM WATER TANK
	PROPOSED CURB		PROPOSED SEWER TANK
	PROPOSED SIDEWALK		PROPOSED STORM WATER CONNECTION

**NOTE**

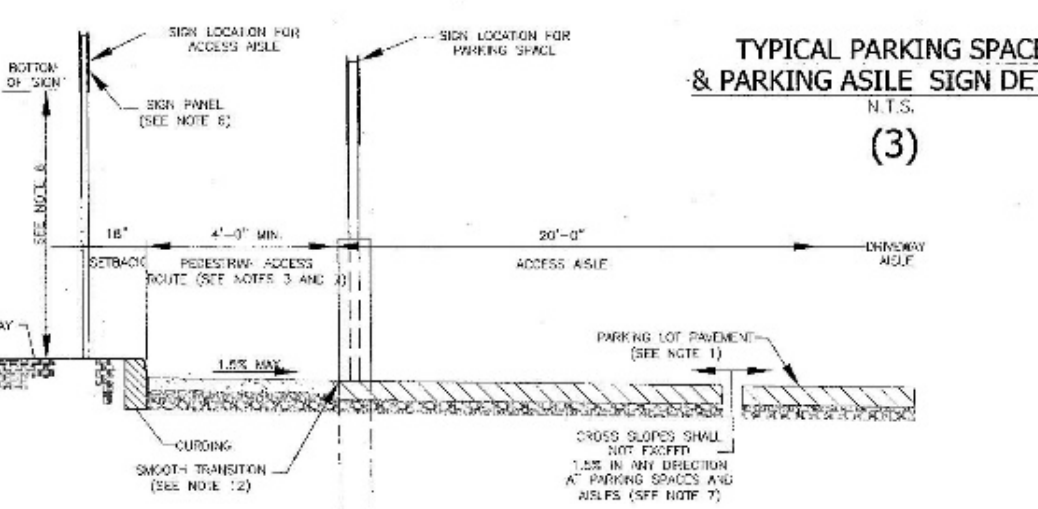
- THIS SHEET IS INTENDED TO BE USED IN CONJUNCTION WITH THE OTHER SHEETS OF THIS PROJECT. ALL DIMENSIONS SHALL BE AS SHOWN UNLESS OTHERWISE SPECIFIED.
- ALL DIMENSIONS SHALL BE IN FEET AND INCHES UNLESS OTHERWISE SPECIFIED. FRACTIONS SHALL BE IN 16THS OF AN INCH.
- THE SHOWN DIMENSIONS OF THE EXISTING AND PROPOSED ACCESSIBLE SPACES SHALL BE AS SHOWN UNLESS OTHERWISE SPECIFIED.

MINIMUM CLEARANCE WIDTH	MINIMUM CLEARANCE LENGTH	MINIMUM CLEARANCE HEIGHT
5'0" TO 5'9"	2'1" TO 2'9"	7'0"
5'10" TO 5'11"	2'10" TO 4'0"	8'0"
5'12" TO 6'0"	2'10" TO 5'0"	9'0"
6'1" TO 6'6"	4'0" TO 10'0"	10'0" TO 12'0"
6'7" TO 8'0"	5'0" TO 10'0"	11'0" TO 12'0"

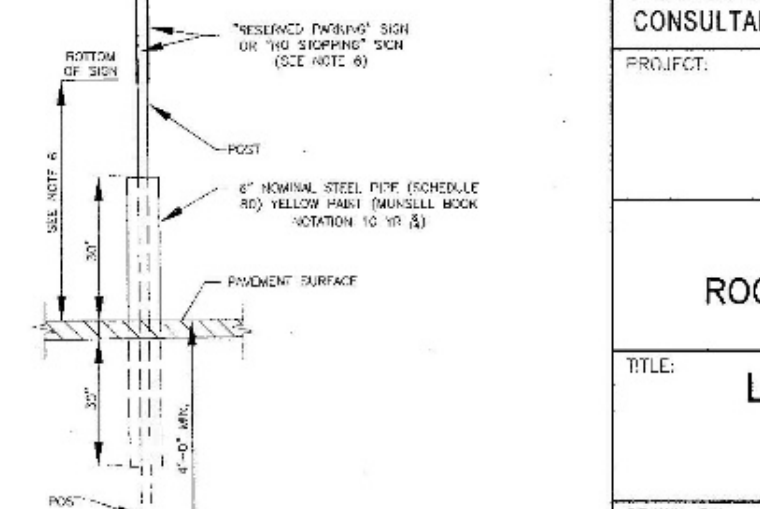
EXCEPTIONS TO THESE RULES ARE: 1) WHEELCHAIR ACCESSIBLE PARKING SPACES SHALL BE 8'0" WIDE AND 5'0" LONG. 2) WHEELCHAIR ACCESSIBLE PARKING SPACES SHALL BE 8'0" WIDE AND 5'0" LONG. 3) WHEELCHAIR ACCESSIBLE PARKING SPACES SHALL BE 8'0" WIDE AND 5'0" LONG.



TYPICAL PARKING SPACE & PARKING AISLE SIGN DETAIL  
N.T.S.  
(3)



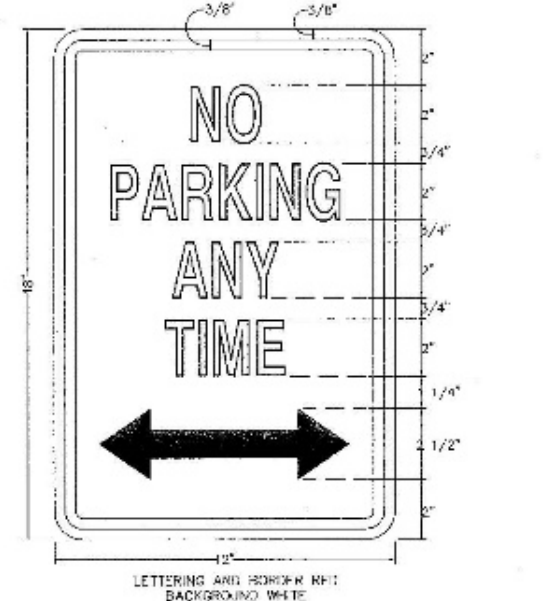
TYPICAL SECTION (SECTION A-A) DETAIL  
N.T.S.



POST BASE DETAIL (SEE NOTE 6)  
N.T.S.



LETTERING AND SIGN NO. 101 (SEE NOTE 4)  
SIGN FOR FIRE LANES  
(4)



LETTERING AND SIGN NO. 102 (SEE NOTE 4)  
SIGN FOR NO PARKING ZONE  
(2)

AT&Z ENGINEERING, INC.  
165 MAMARONECK AVE., FLOOR 2  
WHITE PLAINS, NY 10601  
TEL: (914) 945-4272  
FAX: (914) 945-4273  
WWW.ATZNY.COM

**AT&Z**  
Design Development, p.l.l.c.  
165 MAMARONECK AVE., FLOOR 2  
WHITE PLAINS, NY 10601  
TEL: (914) 945-4272  
FAX: (914) 945-4273  
WWW.ATZNY.COM

**AT&Z**  
A DESIGN AND DEVELOPMENT CONSULTANCY

**EAGLE BAY**

**TOWN OF STONY POINT  
ROCKLAND COUNTY, NEW YORK**

**LIGHTING AND TRAFFIC SIGNS PLAN  
SOUTH**

NO.	DATE	DESCRIPTION
1	06-17-20	SITE PLAN PREPARED FOR REVIEW
2	12-15-19	E.S. SUBMISSION
3	11-04-19	WATER MAIN & CONTOURS NEAR RAILROAD

DRAWN BY: VO  
DATE: AUGUST 01, 2016  
PROJECT NO.: 1407  
CHECKED BY: DMZ  
SCALE: 1" = 30 FT.  
DRAWING NO.: LS-2



# ALED2T150RG/D10



Color: Gray

Weight: 32.0 lbs

Project:

Type:

Prepared By:

Date:

### Driver Info

Type	Constant Current
120V	1.31A
208V	0.80A
240V	0.69A
277V	0.60A
Input Watts	153.20W
Efficiency	98%

### LED Info

Watts	150.00W
Color Temp	5000K (Cool)
Color Accuracy	71 CRI
L70 Lifespan	100,000
Lumens	17,834
Efficacy	116.4 LPW

## Technical Specifications

### Electrical

#### Driver:

One Driver, Constant Current, Class 2, 2100mA 100-277V, 50-60Hz, Power Factor 99%

#### Dimming Driver:

Driver includes dimming control wiring for 0-10V dimming systems. Requires separate 0-10V DC dimming circuit. Dim as low as 10%.

#### THD:

6.6% at 120V, 12.1% at 277V

#### Power Factor:

99.5% at 120V, 93.7% at 277V

#### Surge Protection:

4kV

### Listings

#### DLC Listed:

This product is listed by Design Lights Consortium (DLC) as an ultra-efficient premium product that qualifies for the highest tier of rebates from DLC Member Utilities. DLC Product Code: PPAFM96

#### UL Listed:

Suitable for wet locations

### IESNA LM-79 & LM-80 Testing:

RAB LED luminaires and LED components have been tested by an independent laboratory in accordance with IESNA LM-79 and LM-80.

### Dark Sky Conformance:

Conforms to (allows for conformance to) the IDA's fully shielding requirement, emitting no light above 90 degrees (with the exclusion of incidental light reflecting from fixture housing, mounts, and pole).

### LED Characteristics

#### Lifespan:

100,000-hour LED lifespan based on IES LM-80 results and TM-21 calculations

#### LEDs:

Multi-chip, high-output, long-life LEDs

#### Color Consistency:

7-step MacAdam Ellipse binning to achieve consistent fixture-to-fixture color

#### Color Stability:

LED color temperature is warranted to shift no more than 200K in CCT over a 5-year period

#### Color Uniformity:

RAB's range of CCT (Correlated Color Temperature) follows the guidelines of the American National Standard for Specifications for the Chromaticity of Solid State Lighting (SSL) Products, ANSI C78.377-2017.

### Construction

#### IES Classification:

The Type II distribution is ideal for wide walkways, on ramps and entrance roadways, bike paths and other long and narrow lighting applications. This type is meant for lighting larger areas and usually is located near the roadside. This type of lighting is commonly found on smaller side streets or jogging paths.

#### Effective Projected Area:

EPA = 0.75

#### Maximum Ambient Temperature:

Suitable for use in 40°C (104°F)

#### Cold Weather Starting:

Minimum starting temperature is -40°C (-40°F)

#### Thermal Management:

Superior thermal management with external "Air-Flow" fins

# ALED3T150RG/D10



Color: Gray

Weight: 32.0 lbs

Project:

Type:

Prepared By:

Date:

### Driver Info

Type	Constant Current
120V	1.31A
208V	0.80A
240V	0.69A
277V	0.60A
Input Watts	155.20W
Efficiency	97%

### LED Info

Watts	150.00W
Color Temp	5000K (Cool)
Color Accuracy	71 CRI
L70 Lifespan	100,000
Lumens	16,839
Efficacy	108.5 LPW

## Technical Specifications

### Electrical

#### Driver:

One Driver, Constant Current, Class 2, 2100mA 100-277V, 50-60Hz, Power Factor 99%

#### Dimming Driver:

Driver includes dimming control wiring for 0-10V dimming systems. Requires separate 0-10V DC dimming circuit. Dim as low as 10%.

#### THD:

6% at 120V, 11.3% at 277V

#### Power Factor:

99.5% at 120V, 93.7% at 277V

#### Surge Protection:

4kV

### Listings

#### DLC Listed:

This product is on the Design Lights Consortium (DLC) Qualified Products List and is eligible for rebates from DLC Member Utilities. DLC Product Code: P8IUZVNK

#### UL Listed:

Suitable for wet locations

### IESNA LM-79 & LM-80 Testing:

RAB LED luminaires and LED components have been tested by an independent laboratory in accordance with IESNA LM-79 and LM-80.

### Dark Sky Conformance:

Conforms to (allows for conformance to) the IDA's fully shielding requirement, emitting no light above 90 degrees (with the exclusion of incidental light reflecting from fixture housing, mounts, and pole).

### LED Characteristics

#### Lifespan:

100,000-hour LED lifespan based on IES LM-80 results and TM-21 calculations

#### LEDs:

Multi-chip, high-output, long-life LEDs

#### Color Consistency:

7-step MacAdam Ellipse binning to achieve consistent fixture-to-fixture color

#### Color Stability:

LED color temperature is warranted to shift no more than 200K in CCT over a 5-year period

#### Color Uniformity:

RAB's range of CCT (Correlated Color Temperature) follows the guidelines of the American National Standard for Specifications for the Chromaticity of Solid State Lighting (SSL) Products, ANSI C78.377-2017.

### Construction

#### IES Classification:

The Type III distribution is ideal for roadway, general parking and other area lighting applications where a larger pool of lighting is required. It is intended to be located near the side of the area, allowing the light to project outward and fill the area.

#### Effective Projected Area:

EPA = 0.75

#### Maximum Ambient Temperature:

Suitable for use in 40°C (104°F)

#### Cold Weather Starting:

Minimum starting temperature is -40°C (-40°F)

#### Thermal Management:

Superior thermal management with external "Air-Flow" fins



Color: Gray Weight: 32.0 lbs

<b>Project:</b> <input type="text"/>	<b>Type:</b> <input type="text"/>
<b>Prepared By:</b> <input type="text"/>	<b>Date:</b> <input type="text"/>

Driver Info		LED Info	
Type	Constant Current	Watts	150.00W
120V	1.31A	Color Temp	5000K (Cool)
208V	0.80A	Color Accuracy	71 CRI
240V	0.69A	L70 Lifespan	100,000
277V	0.60A	Lumens	18,464
Input Watts	155.80W	Efficacy	118.5 LPW
Efficiency	96%		

**Technical Specifications**

**Electrical**

**Driver:**  
One Driver, Constant Current, Class 2, 2100mA 100-277V, 50-60Hz, Power Factor 99%

**Dimming Driver:**  
Driver includes dimming control wiring for 0-10V dimming systems. Requires separate 0-10V DC dimming circuit. Dim s as low as 10%.

**THD:**  
4.7% at 120V, 13.3% at 277V

**Power Factor:**  
99.5% at 120V, 93.7% at 277V

**Surge Protection:**  
4kV

**Listings**

**DLC Listed:**  
This product is listed by Design Lights Consortium (DLC) as an ultra-efficient premium product that qualifies for the highest tier of rebates from DLC Member Utilities. DLC Product Code: PIVNP V5F

**UL Listed:**  
Suitable for wet locations

**IESNA LM-79 & LM-80 Testing:**  
RAB LED luminaires and LED components have been tested by an independent laboratory in accordance with IESNA LM-79 and LM-80.

**Dark Sky Conformance:**  
Conforms to (allows for conformance to) the IDA's fully shielding requirement, emitting no light above 90 degrees (with the exclusion of incidental light reflecting from fixture housing, mounts, and pole).

**LED Characteristics**

**Lifespan:**  
100,000-hour LED lifespan based on IES LM-80 results and TM-21 calculations

**LEDs:**  
Multi-chip, high-output, long-life LEDs

**Color Consistency:**  
7-step MacAdam Ellipse binning to achieve consistent fixture-to-fixture color

**Color Stability:**  
LED color temperature is warranted to shift no more than 200K in CCT over a 5-year period

**Color Uniformity:**  
RAB's range of CCT (Correlated Color Temperature) follows the guidelines of the American National Standard for Specifications for the Chromaticity of Solid State Lighting (SSL) Products, ANSI C78.377-2017.

**Construction**

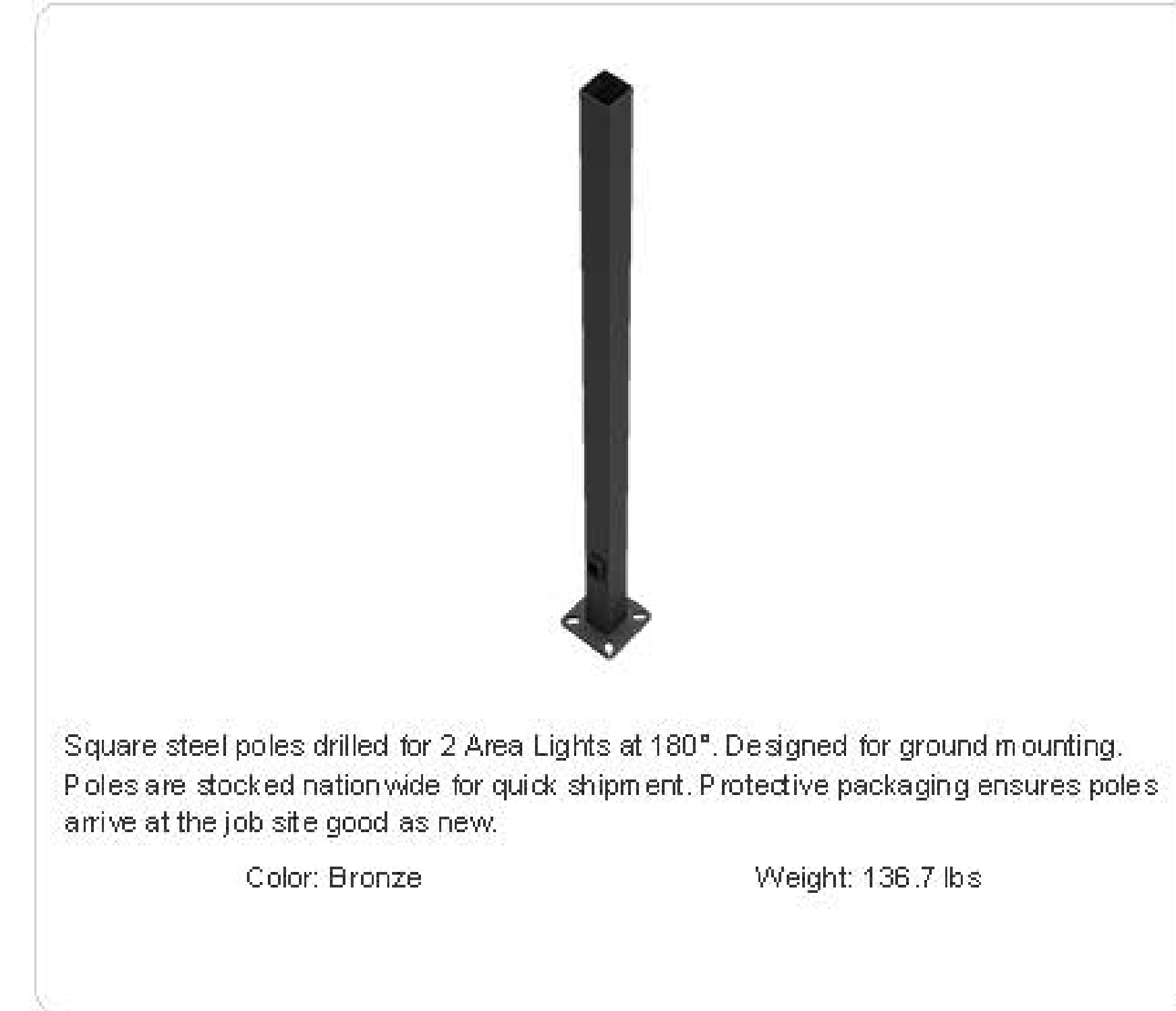
**IES Classification:**  
The Type IV distribution (also known as a Forward Throw) is especially suited for mounting on the sides of buildings and walls, and for illuminating the perimeter of parking areas. It produces a semi-circular distribution with essentially the same candlepower at lateral angles from 90° to 270°.

**Effective Projected Area:**  
EPA = 0.75

**Maximum Ambient Temperature:**  
Suitable for use in 40°C (104°F)

**Cold Weather Starting:**  
Minimum starting temperature is -40°C (-40°F)

**Thermal Management:**  
Superior thermal management with external "Air-Flow" fins



Square steel poles drilled for 2 Area Lights at 180°. Designed for ground mounting. Poles are stocked nationwide for quick shipment. Protective packaging ensures poles arrive at the job site good as new.

Color: Bronze Weight: 136.7 lbs

<b>Project:</b> <input type="text"/>	<b>Type:</b> <input type="text"/>
<b>Prepared By:</b> <input type="text"/>	<b>Date:</b> <input type="text"/>

**Technical Specifications**

**Listings**

**CSA Listed:**  
Suitable for wet locations

**Construction**

**Shaft:**  
46,000 p.s.i. minimum yield.

**Hand Holes:**  
Reinforced with grounding lug and removable cover

**Base Plates:**  
Slotted base plates 36,000 p.s.i.

**Shipping Protection:**  
All poles are shipped in individual corrugated cartons to prevent finish damage

**Color:**  
Bronze powder coating

**Height:**  
20 FT

**Weight:**  
137 lbs

**Gauge:**  
11

**Wall Thickness:**  
1/8"

**Shaft Size:**  
4"

**Hand Hole Dimensions:**  
3" x 5"

**Bolt Circle:**  
8 1/2"

**Base Dimension:**  
8"

**Anchor Bolt:**  
Galvanized anchor bolts and galvanized hardware and anchor bolt template. All bolts have a 3" hook.

**Anchor Bolt Templates:**  
WARNING Template must be printed on 11" x 17" sheet for actual size. CHECK SCALE BEFORE USING. Templates shipped with anchor bolts and available [online](#).

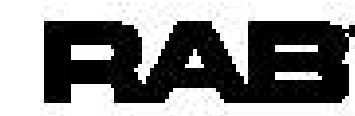
**Pre-Shipped Anchor Bolts:**  
Bolts can be pre-shipped upon request for additional freight charge

**Max EPA's/Max Weights:**  
70MPH 10.7 ft./360 lb.  
80MPH 7.0 ft./350 lb.  
90MPH 4.3 ft./350 lb.  
100MPH 2.5 ft./350 lb.  
110MPH 1.1 ft./350 lb.  
120MPH 0.1 ft./340 lb

**Other**

**Terms of Sale:**  
Pole Terms of Sale is available [online](#).

# ALED5T26RG/D10



High output LED pole top area light with IES type V circular distribution. Wide and uniform 360 degree pattern ideal for large outdoor areas such as parking lots, corporate parks, and retail settings.

Color: Gray

Weight: 21.8 lbs

Project:

Type:

Prepared By:

Date:

### Driver Info

Type	Constant Current
120V	0.30A
208V	0.17A
240V	0.15A
277V	0.13A
Input Watts	27.10W
Efficiency	96%

### LED Info

Watts	26.00W
Color Temp	5000K (Cool)
Color Accuracy	72 CRI
L70 Lifespan	100,000
Lumens	3,022
Efficacy	111.5 LPW

## Technical Specifications

### Listings

#### UL Listed:

Suitable for wet locations

#### IESNA LM-79 & IESNA LM-80 Testing:

RAB LED luminaires and LED components have been tested by an independent laboratory in accordance with IESNA LM-79 and LM-80.

#### Dark Sky Conformance:

Conforms to (allows for conformance to) the IDA's fully shielding requirement, emitting no light above 90 degrees (with the exclusion of incidental light reflecting from fixture housing, mounts, and pole).

#### DLC Listed:

This product is on the Design Lights Consortium (DLC) Qualified Products List and is eligible for rebates from DLC Member Utilities. DLC Product Code: PKUDAPNR

### LED Characteristics

#### LEDs:

High-output, long-life LEDs

#### Lifespan:

100,000-hour LED lifespan based on IES LM-80 results and TM-21 calculations

#### Color Consistency:

7-step MacAdam Ellipse binning to achieve consistent fixture-to-fixture color

#### Color Stability:

LED color temperature is warranted to shift no more than 200K in CCT over a 5-year period

#### Color Uniformity:

RAB's range of CCT (Correlated Color Temperature) follows the guidelines of the American National Standard for Specifications for the Chromaticity of Solid State Lighting (SSL) Products, ANSI C78.377-2017.

### Construction

#### Cold Weather Starting:

Minimum starting temperature is -40°C (-40°F)

#### Maximum Ambient Temperature:

Suitable for use in 40°C (104°F)

#### Effective Projected Area:

EPA = 1.2

#### Thermal Management:

Superior thermal management with external air-flow fins

#### Housing:

Precision die-cast aluminum, Type V distribution

#### Support Arms:

Extruded aluminum

#### Lens:

Clear tempered glass lens

#### Reflector:

Specular vacuum-metallized polycarbonate, Type V distribution

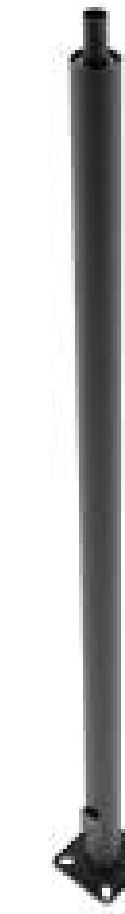
#### Gaskets:

High-temperature silicone

#### Finish:

Formulated for high durability and long-lasting color

# PR4-11-10WT



Color: Bronze

Weight: 67.5 lbs

Project:

Type:

Prepared By:

Date:

## Technical Specifications

### Listings

#### CSA Listed:

Suitable for wet locations

### Construction

#### Description:

Steel pole 4" round 11 gauge 10 foot welded tenon square base

#### Shaft:

46,000 p.s.i. minimum yield.

#### Hand Holes:

Reinforced with grounding lug and removable cover

#### Base Plates:

Slotted base plates 36,000 p.s.i.

#### Color:

Bronze powder coating

#### Tenon:

Welded 2 3/8" tenon included

#### Height:

10 FT

#### Gauge:

11

#### Wall Thickness:

1/8"

#### Shaft Size:

4"

#### Anchor Bolt Templates:

WARNING: Template must be printed on 11" x 17" sheet for actual size. CHECK SCALE BEFORE USING. Templates shipped with anchor bolts and available [online](#).

#### Max EPA's/Max Weights:

70MPH	19.1 ft./700 lb.
80MPH	14.4 ft./520 lb.
90MPH	11.1 ft./585 lb.
100MPH	8.7 ft./445 lb.
110MPH	7.0 ft./370 lb.
120MPH	5.7 ft./335 lb.
130MPH	4.6 ft./300 lb.
140MPH	3.8 ft./265 lb.
150MPH	3.1 ft./180 lb.

#### Accessories:

Base/Cap: [BASE-R4](#)  
Anchor Bolts: [BOLT4/1.1](#)

#### Other

#### Terms of Sale:

Pole Terms of Sale is available [online](#).

#### Buy American Act Compliance:

RAB values USA manufacturing! Upon request, RAB may be able to manufacture this product to be compliant with the Buy American Act (BAA). Please contact customer service to request a quote for the product to be made BAA compliant.





LED bollard with architectural quality and strength at an affordable price point. Cylindrical post with round head. Available in 4 light pattern configurations including 360° (24W), 270°(18W), 180°(12W option) & 90°(12W standard).

Color: Bronze

Weight: 22.4 lbs

Project:

Type:

Prepared By:

Date:

**Driver Info**

Type	Constant Current
120V	0.26A
208V	0.18A
240V	0.15A
277V	0.14A
Input Watts	23.20W
Efficiency	N/A

**LED Info**

Watts	24.00W
Color Temp	5100K (Cool)
Color Accuracy	74 CRI
L70 Lifespan	100,000
Lumens	2,546
Efficacy	109.7 LPW

**Technical Specifications**

**Listings**

**UL Listed:**

Suitable for wet locations. Suitable for mounting within 4 ft. (1.2m) of the ground.

**IESNA LM-79 & IESNA LM-80 Testing:**

RAB LED luminaires and LED components have been tested by an independent laboratory in accordance with IESNA LM-79 and LM-80.

**DLC Listed:**

This product is on the Design Lights Consortium (DLC) Qualified Products List and is eligible for rebates from DLC Member Utilities. DLC Product Code: P0000171Y

**LED Characteristics**

**LEDs:**

Long-life, high-efficiency, surface-mount LEDs

**Lifespan:**

100,000-hour LED lifespan based on IES LM-80 results and TM-21 calculations

**Color Consistency:**

5-step MacAdam Ellipse binning to achieve consistent fixture-to-fixture color

**Color Stability:**

LED color temperature is warranted to shift no more than 200K in CCT over a 5-year period

**Color Uniformity:**

RAB's range of CCT (Correlated Color Temperature) follows the guidelines of the American National Standard for Specifications for the Chromaticity of Solid State Lighting (SSL) Products, ANSI C78.377-2017

**Optical**

**BUG Rating:**

B2 U3 G2

**Construction**

**Cold Weather Starting:**

Minimum starting temperature is -40°C (-40°F)

**Thermal Management:**

Cast aluminum Thermal Management system for optimal heat sinking. The BLEDR is designed for cool operation, maximum efficiency and long life by minimizing LED junction temperature.

**Housing:**

Die-cast aluminum with extruded aluminum post

**Lens:**

Frosted vandal resistant polycarbonate

**Reflector:**

Vacuum-metalized polycarbonate

**Mounting:**

Four (4) anchor bolts provided for concrete pad mounting. Internal base support has leveling screws.

**Gaskets:**

High-temperature silicone gaskets seal out moisture gaskets seal out moisture

**Anchor Bolt:**

Anchor Bolt Dimension is available [here](#).

**Finish:**

Our environmentally friendly polyester powder coatings are formulated for high-durability and long-lasting color

**Green Technology:**

Mercury and UV free. RoHS-compliant components.