



EAGLE BAY MIXED USE DEVELOPMENT SITE PLAN PRESENTATION

Section II: Landscaping

TOWN OF STONY POINT, NY
OCTOBER 22, 2020





SCALE: 1/8" = 30'

PLANTING SPECIFICATIONS:

GENERAL: All plants, trees, and shrubs shall meet the specifications for "plant material" as per the American Standard for Nursery Stock. The landscape architect reserves the right to inspect all plants prior to shipping and installation. There are to be no substitutions of the plants without the consent of the landscape architect.

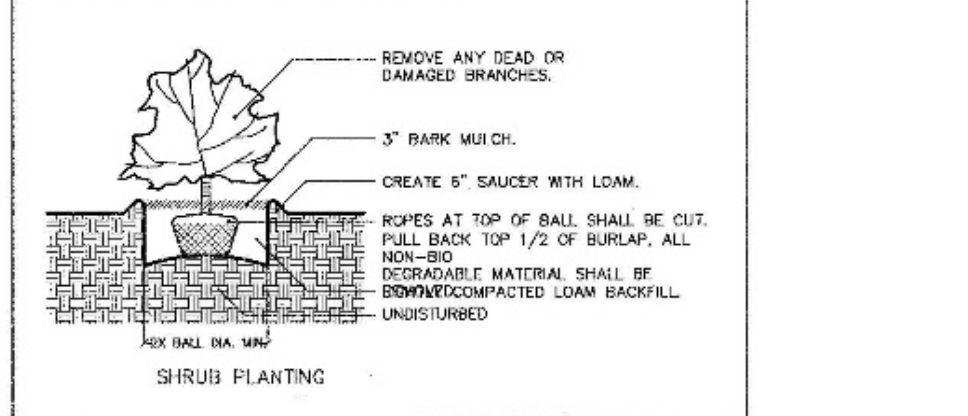
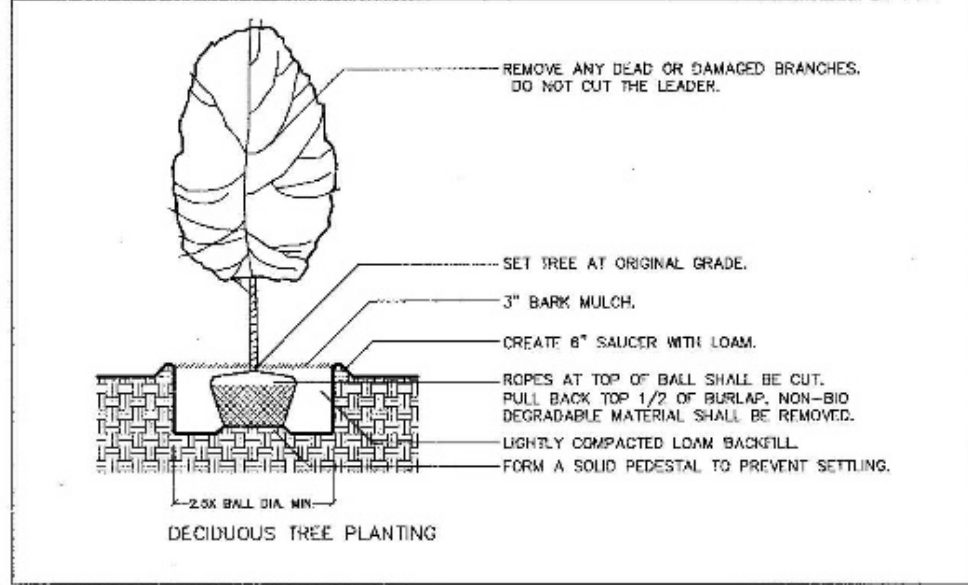
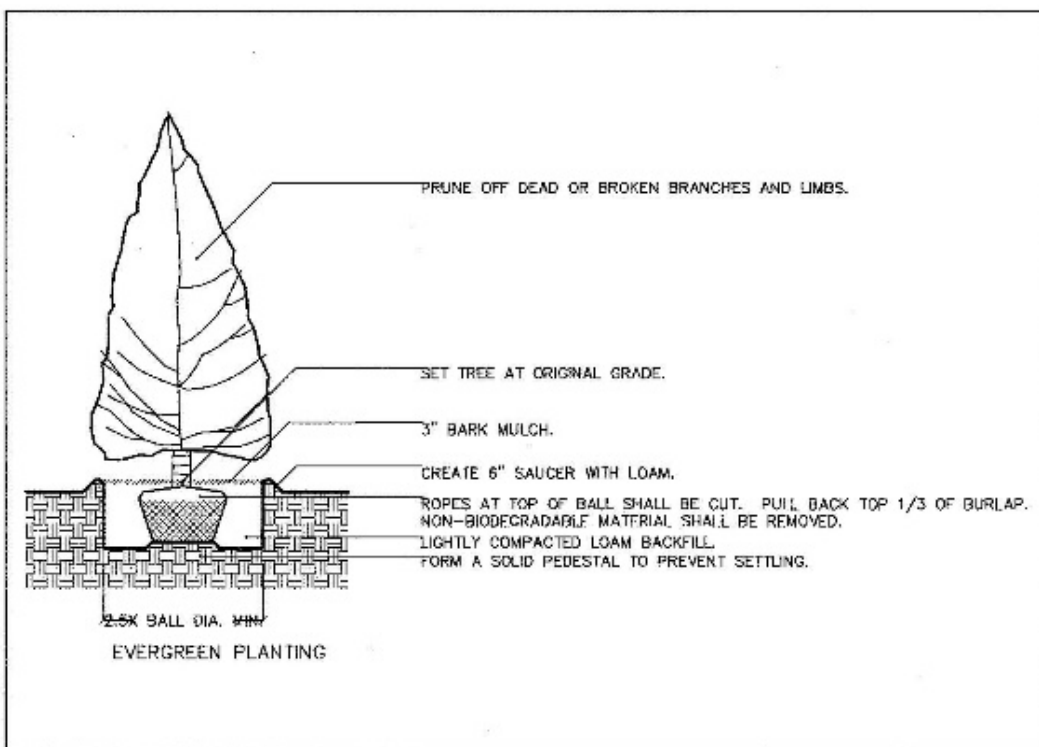
PLANTING: All plants shall be planted in pits two times the diameter of the root ball or container. Plant height should be placed at or slightly above previous grade. Pull back burlap from top of ball and cut wire on tree loosely. Ensure that the burlap is not exposed above grade because of water loss. Staking and guying shall be used only when necessary. When the method is used, care should be taken to protect the tree bark and wires should be removed as soon as possible.

MULCHING: All planting beds (EXCEPT GROUNDCOVER) shall be mulched with three inches of shredded bark to conserve water and keep roots covered during initial growth stage. Do not place mulch heavily around crown of plants.

WINTER CARE: All trees and shrubs shall be sprayed with an anti-desiccant the first November after planting.

WATERING: All plants shall be watered by the contractor during the initial growth stage. Trees shall be heavily watered several times during the first month after planting and then regularly for the next two summers.

PLANT GUARANTEE: Contractor shall guarantee all newly installed plants for one-year provided that they are given proper watering/care and contractor is notified of unhealthy stressed plants immediately.



RIP RAP WATERFRONT PLANTING

Area for Rip Rap planting: The area of planting shall be from the average high tide level to the top of the rip rap wall embankment. The full length of the water front rip rap sea wall shall be vegetated with the rooted plug plantings. The length of the water front rip rap sea wall is 1,162 linear feet. The area from the level of mean high tide (elevation +3) to the top of the sea wall (elevation +8) providing an expected rip rap area of 5' x 1,162 linear feet = 7,310 face feet of area for vegetative planting.

Spacing the plantings is 1 plant per 4 face feet = 1,800 plants.

Plant Material for the Rip Rap sea wall: Plant material shall be live herbaceous, well rooted stock obtained from commercial sources in bare root form. The root stock shall be full and at least 6" in length.

Deschampsia cespitosa - Tufted Hairgrass: 60% of Rip Rap area @ 1 per 4 face feet = 1,080 plants.

Iris versicolor - Blue Flag Iris: 10% of Rip Rap area @ 1 per 4 face feet = 180 plants.

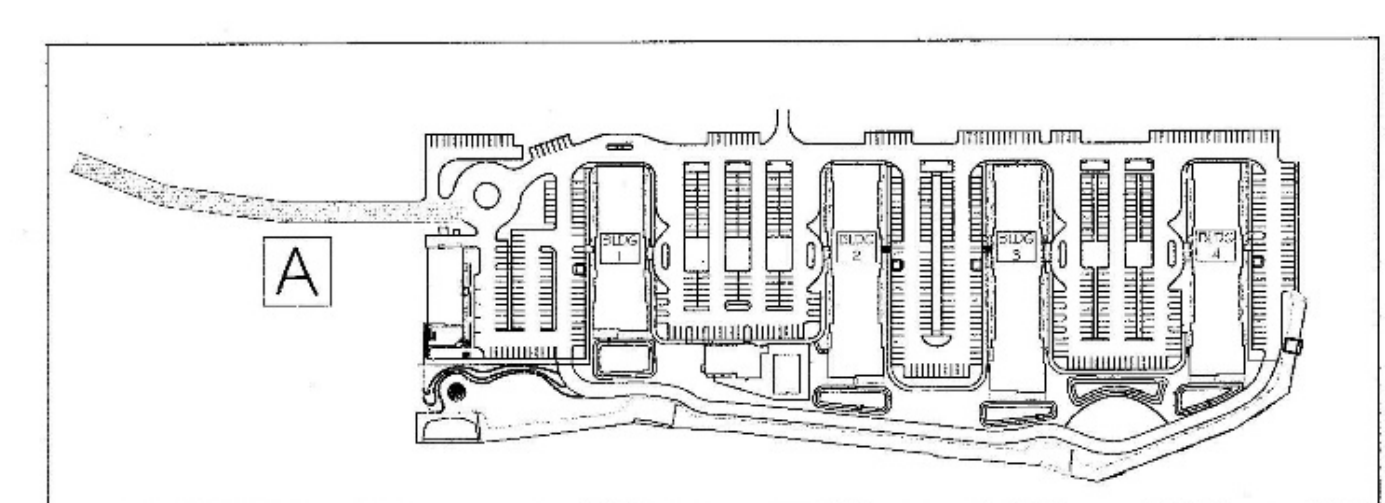
Juncus effusus - Soft Rush: 20% of Rip Rap area @ 1 per 4 face feet = 360 plants.

Fuchsia hirta - Black-eyed Susan: 10% of Rip Rap area @ 1 per 4 face feet = 180 plants.

Planting and Stabilized the Bare Root plantings: The plantings shall be rolled with soil and organic compost soil material with 8" x 8" sections of decomposable, pine erosion blanket material and fitted into the voids in the rip rap shore embankment. Where the root voids are large the rooted plantings shall be stabilized with rubble rock and gravel.

The rooted plug plantings shall be planted in randomly placed patches with 15-20 plants in each patched area.

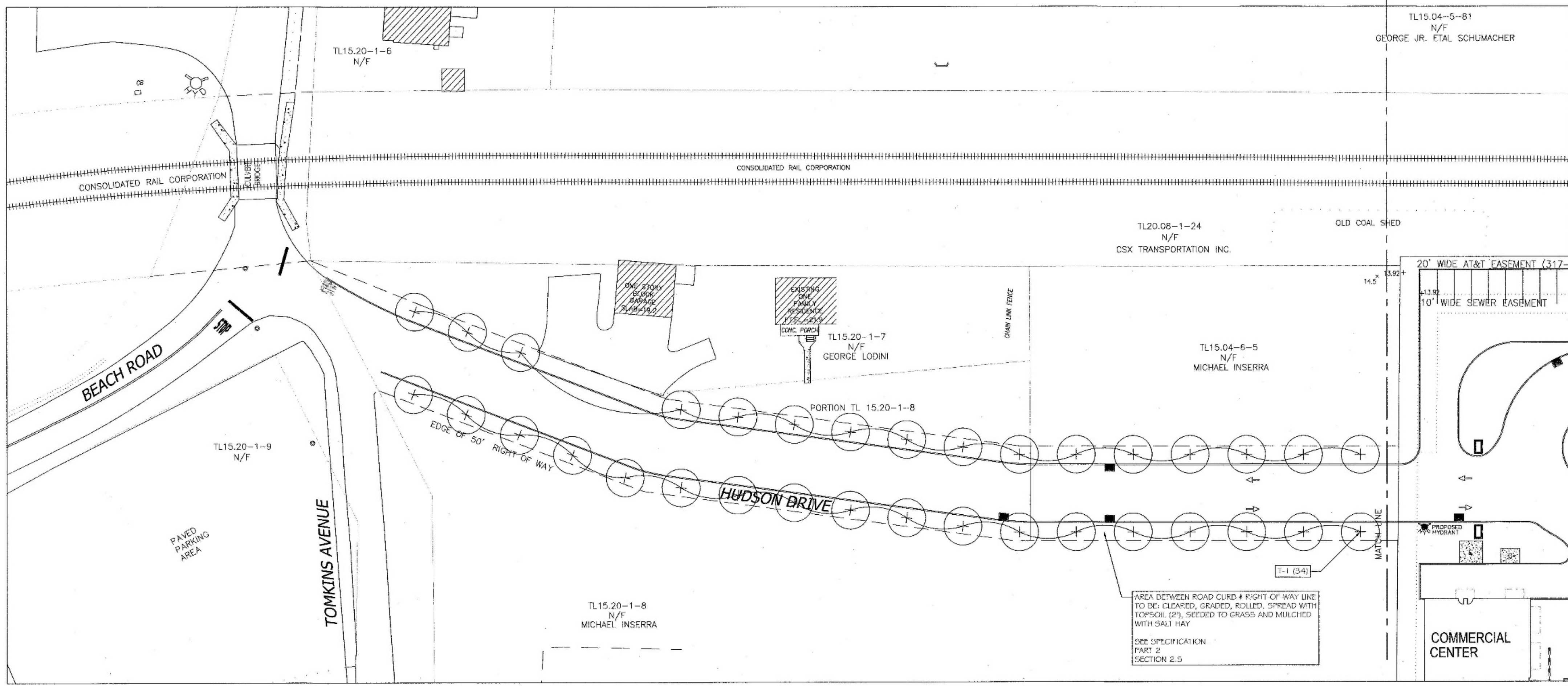
Key	Scientific Name	Common Name	Size	
Trees				
T1	<i>Acer rubrum</i>	Red Maple	2.5'-3" cal.	Wrap trunks first winter for sun and wind damage
T2	<i>Acer saccharum</i>	Sugar Maple	2.5'-3" cal.	Wrap trunks first winter for sun and wind damage
T3	<i>Amelanchier canadensis</i>	Shadblow Serviceberry	8-10 ht.	
T4	<i>Crataegus villosa</i> 'Winter King'	Winter King Hawthorn	2.5'-3" cal.	Wrap trunks first winter for sun and wind damage
T5	<i>Cornus alternifolia</i>	Alternate Leaf Dogwood	8-10 ht.	Wrap trunks first winter for sun and wind damage
T6	<i>Clethra alnifolia</i>	Thornless Common Honeylocust	2.5'-3" cal.	Wrap trunks first winter for sun and wind damage
T7	<i>Ilex opaca</i>	American Holly	3-4 ht.	Spray first winter with anti-desiccant
T8	<i>Ilex opaca</i>	American Holly	8-10 ht.	Spray first winter with anti-desiccant
T9	<i>Juniperus virginiana</i>	Eastern Red Cedar	8-10 ht.	
T10	<i>Lysichiton sylvatica</i>	Black Tupelo	2.5'-3" cal.	Wrap trunks first winter for sun and wind damage
T11	<i>Pinus rigida</i>	Pitch Pine	8-10 ht.	
T12	<i>Platanus occidentalis</i>	American Sycamore	2.5'-3" cal.	Wrap trunks first winter for sun and wind damage
T13	<i>Quercus bicolor</i>	Swamp White Oak	2.5'-3" cal.	Wrap trunks first winter for sun and wind damage
T14	<i>Quercus palustris</i>	Pin Oak	2.5'-3" cal.	Wrap trunks first winter for sun and wind damage
Shrubs				
S1	<i>Aronia melanocarpa</i>	Black Chokeberry	5 gal.	Prune to maintain at 3' to 4' height.
S2	<i>Cephalanthus occidentalis</i>	Button Bush	5 gal.	Prune to maintain at 3' to 4' height.
S3	<i>Cornus sericea</i>	Red Twig Dogwood	5 gal.	Prune to maintain at 3' to 4' height.
S4	<i>Diervilla lonicera</i>	Northern Bush Honeysuckle	5 gal.	Prune to maintain at 3' to 4' height.
S5	<i>Hydrangea arborescens</i> 'Annabelle'	Annabelle Hydrangea	5 gal.	Dead Head after flowering
S6	<i>Ilex crenata</i> 'Chesapeake'	Chesapeake Holly	4" ht.	Maintain as neat, rounded hedge, spray in winter with anti-desiccant
S7	<i>Ilex glabra</i>	Winterberry	24"-36" ht.	Maintain as neat, rounded hedge, spray in winter with anti-desiccant
S8	<i>Ilex verticillata</i>	Winterberry	3-4 ht.	Prune to maintain at 4' to 5' height.
S9	<i>Iris virginica</i>	Virginia Sweetflag	5 gal.	Prune to maintain at 3' to 4' height.
S10	<i>Juniperus horizontalis</i> 'Wiltonii'	Wilton Carpet Juniper	3 gal.	Maintain from growing out into paths or lawns.
S10a	<i>Juniperus chinensis</i> 'Sargentii'	Sargent Juniper	3 gal.	Prune to maintain at 4' to 5' height.
S11	<i>Nyctaginia pennsylvanica</i>	Bayberry	5 gal.	Prune to maintain at 4' to 5' height.
S12	<i>Physocarpus opulifolius</i> 'Diabolo'	Ninebark	7 gal.	Prune to maintain at 4' to 5' height.
S13	<i>Potentilla fruticosa</i>	Bush Cinquifoliate	5 gal.	Prune to maintain at 3' to 4' height.
S14	<i>Rhododendron spp. paniculoides</i>	Pinxter Azalea	3-4 ht.	Prune to maintain at 3' to 4' height.
S15	<i>Rosa carolina</i>	Petiture Rose	5 gal.	Prune to maintain at 3' to 4' height.
S16	<i>Viburnum acerifolium</i>	Mapleleaf Viburnum	7 gal.	Prune to maintain at 4' to 5' height.
S17	<i>Viburnum dentatum</i>	Arrowwood Viburnum	7 gal.	Prune to maintain at 5' to 6' height.
S18	<i>Viburnum lentago</i>	Nannyberry	5 gal.	Prune to maintain at 5' to 6' height.
S19	<i>Viburnum plicatum</i> 'var. 'Shasta'	Double Viburnum 'Shasta'	10 gal.	Prune to maintain at 5' to 6' height.
Perennials				
P1	<i>Aster diversifolius</i>	White Heather Asters	1 gal.	Keep free of weeds, dead head after flowering
P2	<i>Astilbe spp.</i>	Astilbe	1 gal.	Keep free of weeds, dead head after flowering
P3	<i>Carex edurena</i>	Moss Sedge	1 gal.	Keep free of weeds
P4	<i>Carex polyphylla</i>	Broad Leaf Sedge	1 gal.	Keep free of weeds
P5	<i>Coronopsis lanceolata</i>	Lanceleaf Coronopsis	1 gal.	Keep free of weeds, dead head after flowering
P6	<i>Echinacea</i>	Cone Flower	1 gal.	Keep free of weeds, dead head after flowering
P6a	<i>Eupatorium purpureum</i>	Purple Joe-Pye Weed	1 gal.	Keep free of weeds, dead head after flowering
P7	<i>Geranium maculatum</i>	Wild Geranium	1 gal.	Keep free of weeds
P8	<i>Fuchsia americana</i>	Coral Bells	1 gal.	Keep free of weeds, dead head after flowering
P9	<i>Iris versicolor</i>	Blue Flag Iris	1 gal.	Keep free of weeds, dead head after flowering
P10	<i>Liatris spicata</i>	Blazing Star	1 gal.	Keep free of weeds, dead head after flowering
P11	<i>Morandia didyma</i>	Scarlet Bealcomb, Chicago Tea	1 gal.	Keep free of weeds, dead head after flowering
P12	<i>Onoclea rudicosa</i>	Sundrops	1 gal.	Keep free of weeds, mow clean in April
P13	<i>Rudbeckia hirta</i>	Black Eye Susans	1 gal.	Keep free of weeds, dead head after flowering
P14	<i>Linola perniculata</i>	Sea Oats	1 gal.	Keep free of weeds, mow clean in April
Ground Covers				
GC1	<i>Aristida flexuosa</i>	Beet Berry	4" pots	Keep free of weeds
GC2	<i>Liriope spicata</i>	Liriope	1 gal.	Keep free of weeds, cut foliage off in March / April
GC3	<i>Pachysandra terminalis</i>	Pachysandra	flats	Keep free of weeds
GC4	<i>Vincis minor</i>	Myrtle	1 gal.	Keep free of weeds
Ferns				
F1	<i>Onoclea sensibilis</i>	Sensitive Fern	1 gal.	Keep free of weeds
Rip Rap Plantings				
RR1	<i>Deschampsia cespitosa</i>	Tufted Hairgrass	plug	Keep free of weeds
RR2	<i>Iris versicolor</i>	Blue Flag Iris	plug	Keep free of weeds
RR3	<i>Juncus effusus</i>	Soft Rush	plug	Keep free of weeds
RR4	<i>Rudbeckia hirta</i>	Black-eyed Susan	plug	Keep free of weeds



KEY PLAN NOT TO SCALE

Landscape Sheet L-1

Key	Scientific Name	Common Name	Size	Quantity
T1	<i>Acer rubrum</i>	Red Maple	2.5'-3" cal.	34



PLAN - ENTRANCE DRIVE - AREA 'A'



DANIEL SHERMAN
 LANDSCAPE ARCHITECT
 4 BROADWAY - SUITE 9
 VALHALLA, NY 10595
 PHONE: (914) 824 - 0999
 FAX: (914) 824-0251

PROJECT:
EAGLE BAY

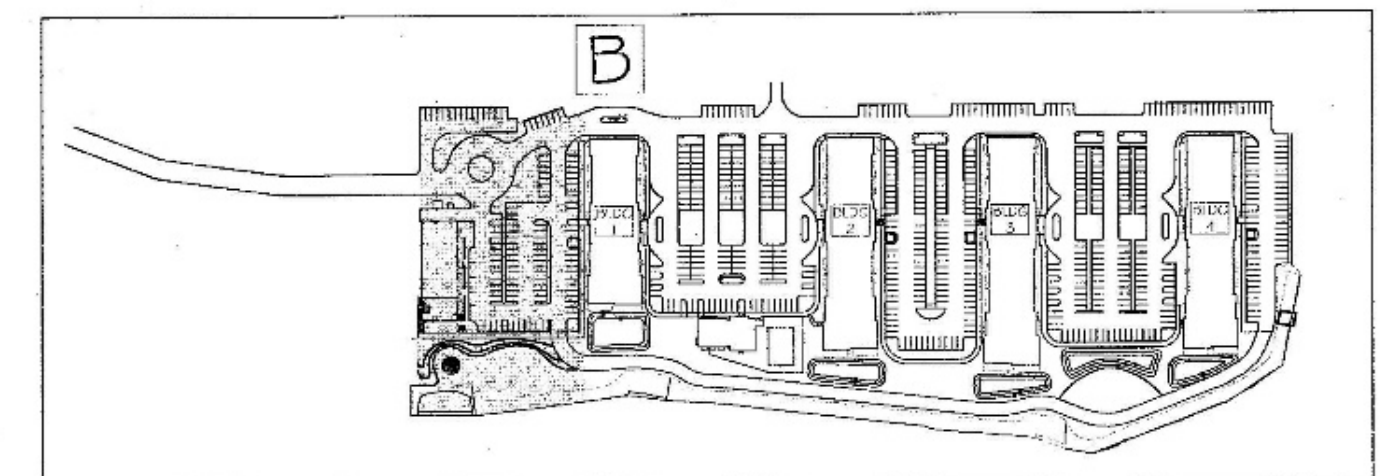
TOWN OF STONY POINT
 ROCKLAND COUNTY, NEW YORK

TITLE:
**LANDSCAPING PLAN
 AREA 'A' - ENTRANCE DRIVE**

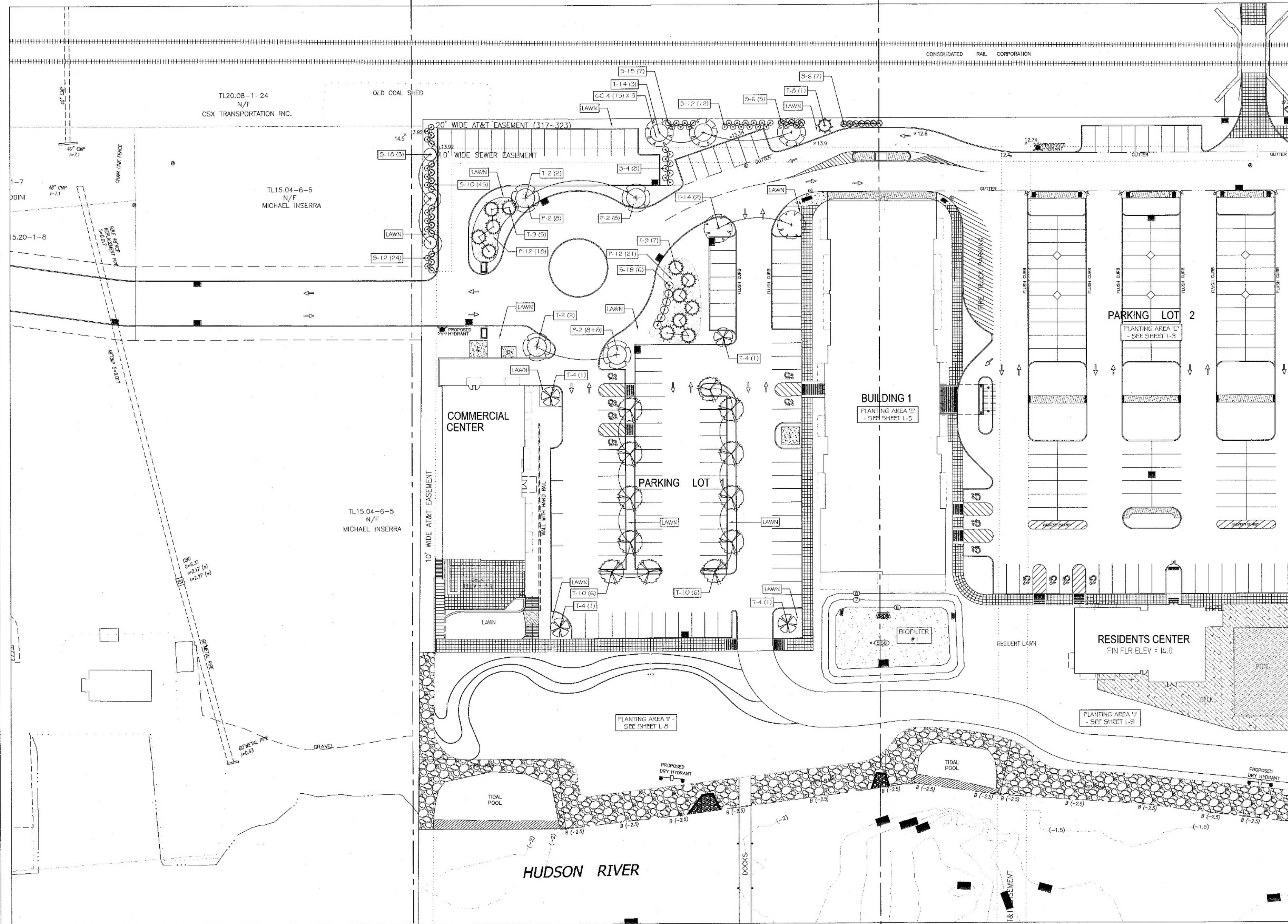
DRAWN BY: AL CHECKED BY: DWS
 DATE: MAY 30, 2018 SCALE: 1" = 30 FT.
 PROJECT NO: DRAWING NO:

1407 L-1

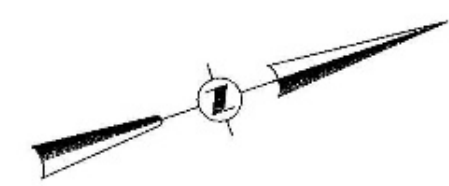
Landscape Sheet L-2				
Key	Scientific Name	Common Name	Size	Quantity
Trees				
T2	<i>Acer saccharum</i>	Sugar Maple	2.5'-3" cal.	4
T4	<i>Crataegus viridis 'Winter King'</i>	Winter King Hawthorn	2.5'-3" cal.	4
T8	<i>Ilex opaca</i>	American Holly	8'-10' h.	1
T9	<i>Juniperus virginiana</i>	Eastern Red Cedar	8'-10' h.	12
T10	<i>Nyssa sylvatica</i>	Black Tupelo	2.5'-3" cal.	12
T14	<i>Quercus pallustris</i>	Pn Oak	2.5'-3" cal.	5
Shrubs				
S4	<i>Dierella lonicera</i>	Northern Bush Honeysuckle	5 gal.	8
S6	<i>Ilex cornata 'Chesapeake'</i>	Chesapeake Holly	4' ht.	12
S12	<i>Physocarpus opulifolius 'Diabolo'</i>	Ninebark	7 gal.	36
S15	<i>Rosa carolina</i>	Pasture Rose	5 gal.	7
S18	<i>Viburnum lentago</i>	Nannyberry	5 gal.	3
S19	<i>Viburnum plicatum (om. 'Shasta')</i>	Double Viburnum Shasta	10 gal.	6
Perennials				
P2	<i>Astilbe sp.</i>	Astilbe	1 gal.	32
P12	<i>Demochloa frutescens</i>	Sundrops	1 gal.	39
Ground Covers				
GCA	<i>Viola minor</i>	Myrtle	1 gal.	45



KEY PLAN
NOT TO SCALE



PLAN - PARKING LOT 1 - AREA 'B'



DANIEL SHERMAN
LANDSCAPE ARCHITECT
4 BROADWAY - SUITE 9
VALHALLA, NY 10995
PHONE: (914) 824 - 0999
FAX: (914) 824-0251

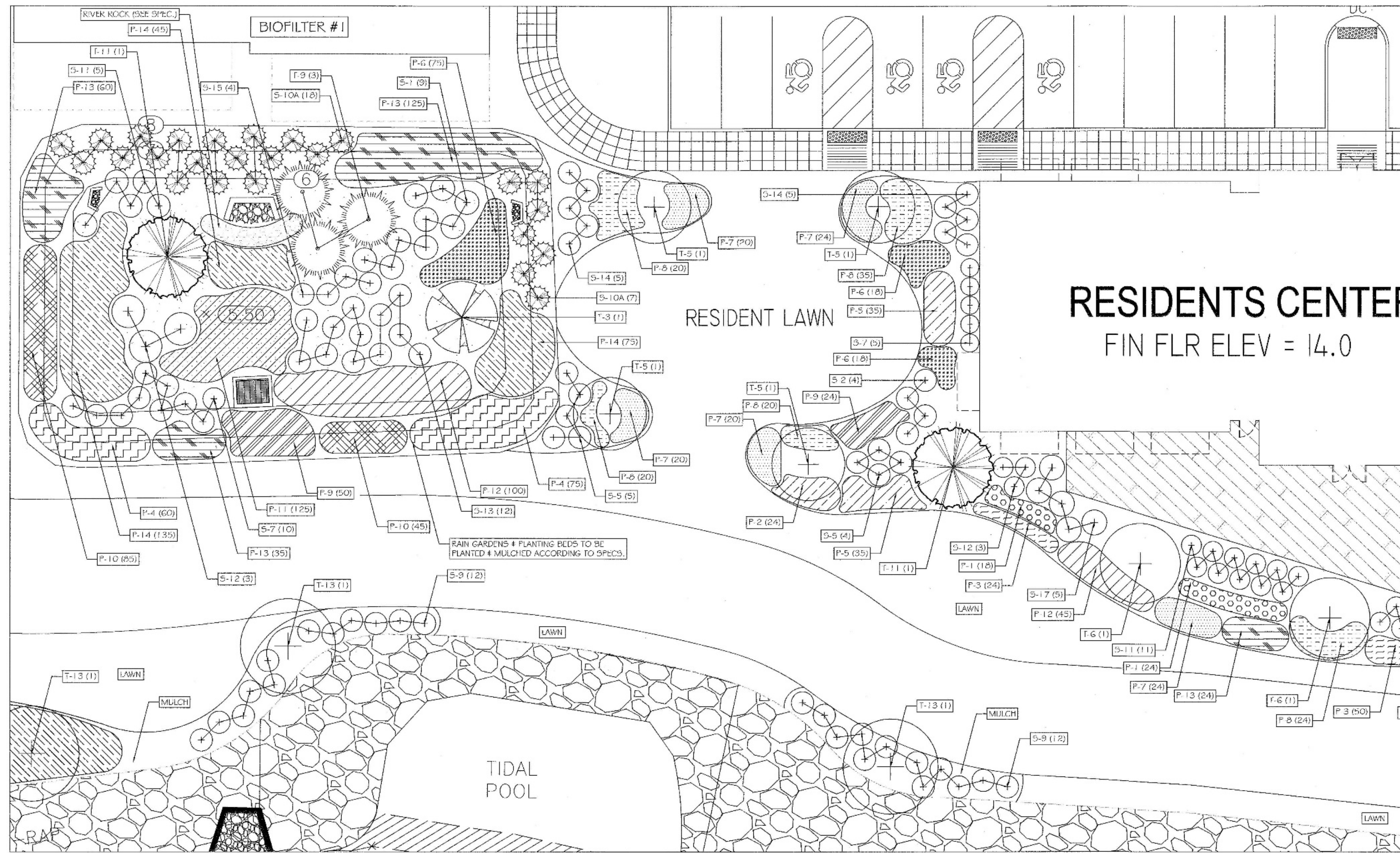
PROJECT:
EAGLE BAY
TOWN OF STONY POINT
ROCKLAND COUNTY, NEW YORK

TITLE:
**LANDSCAPING PLAN
AREA 'B' - PARKING LOT 1**

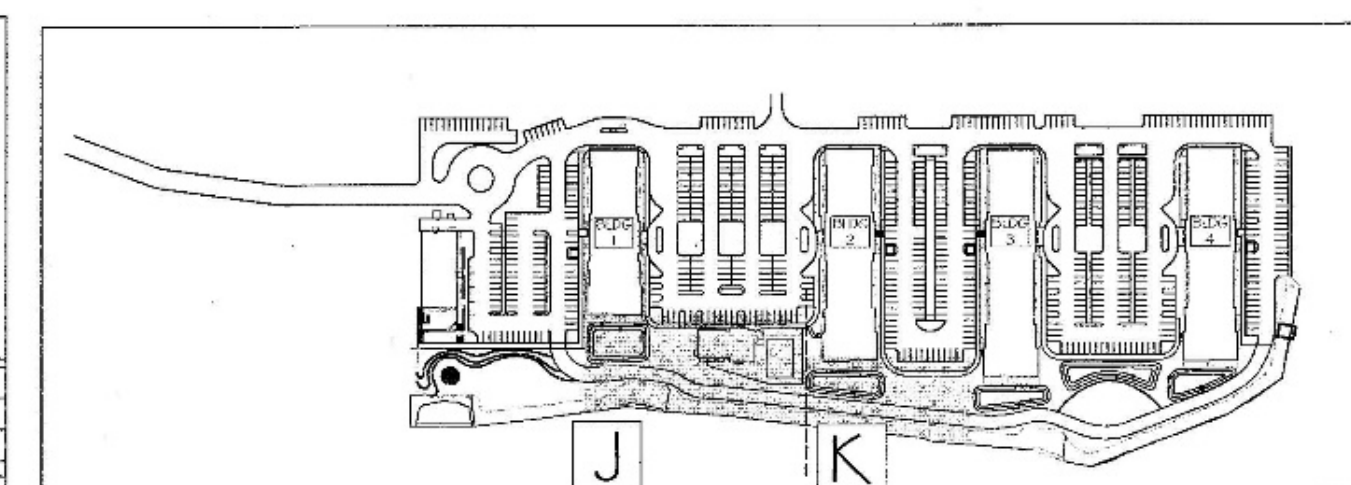
DRAWN BY: AL
DATE: MAY 30, 2018
PROJECT NO:

CHECKED BY: DMS
SCALE: 1/8" = 30 FT.
DRAWING NO:



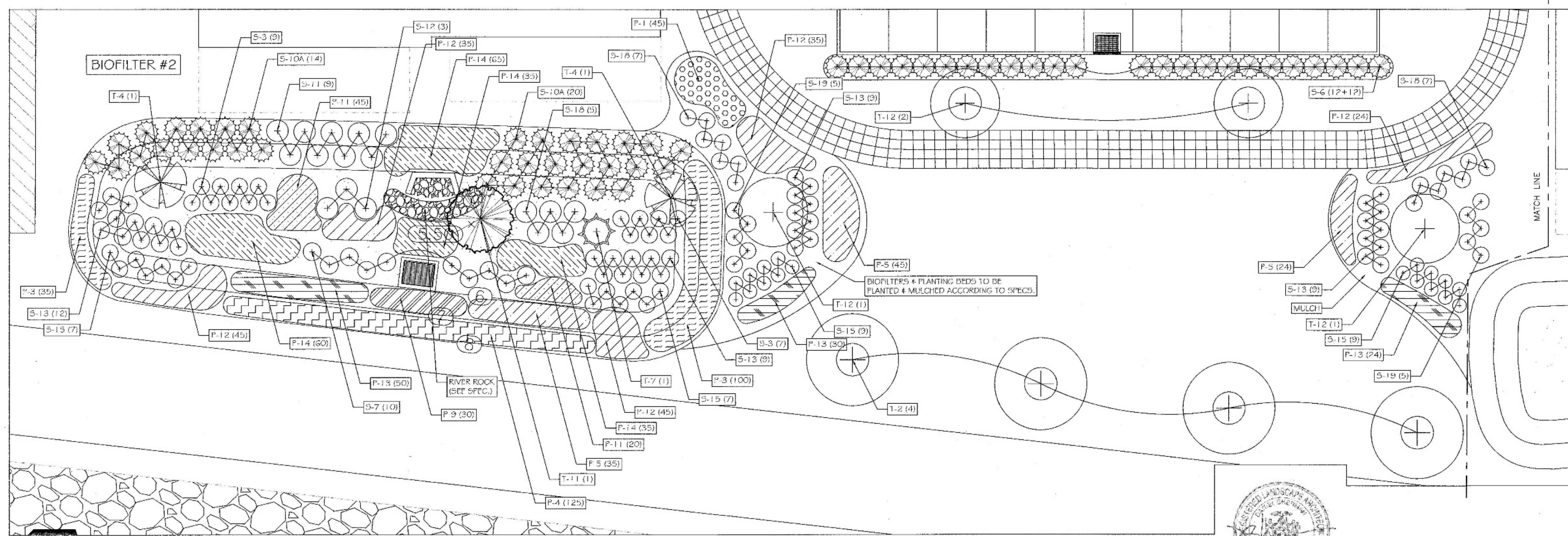


RESIDENTS CENTER
FIN FLR ELEV = 14.0



Plant Code	Plant Name	Quantity	Notes
P-1	Plant 1	1	
P-2	Plant 2	2	
P-3	Plant 3	3	
P-4	Plant 4	4	
P-5	Plant 5	5	
P-6	Plant 6	6	
P-7	Plant 7	7	
P-8	Plant 8	8	
P-9	Plant 9	9	
P-10	Plant 10	10	
P-11	Plant 11	11	
P-12	Plant 12	12	
P-13	Plant 13	13	
P-14	Plant 14	14	
P-15	Plant 15	15	
P-16	Plant 16	16	
P-17	Plant 17	17	
P-18	Plant 18	18	
P-19	Plant 19	19	
P-20	Plant 20	20	
P-21	Plant 21	21	
P-22	Plant 22	22	
P-23	Plant 23	23	
P-24	Plant 24	24	
P-25	Plant 25	25	
P-26	Plant 26	26	
P-27	Plant 27	27	
P-28	Plant 28	28	
P-29	Plant 29	29	
P-30	Plant 30	30	
P-31	Plant 31	31	
P-32	Plant 32	32	
P-33	Plant 33	33	
P-34	Plant 34	34	
P-35	Plant 35	35	
P-36	Plant 36	36	
P-37	Plant 37	37	
P-38	Plant 38	38	
P-39	Plant 39	39	
P-40	Plant 40	40	
P-41	Plant 41	41	
P-42	Plant 42	42	
P-43	Plant 43	43	
P-44	Plant 44	44	
P-45	Plant 45	45	
P-46	Plant 46	46	
P-47	Plant 47	47	
P-48	Plant 48	48	
P-49	Plant 49	49	
P-50	Plant 50	50	
P-51	Plant 51	51	
P-52	Plant 52	52	
P-53	Plant 53	53	
P-54	Plant 54	54	
P-55	Plant 55	55	
P-56	Plant 56	56	
P-57	Plant 57	57	
P-58	Plant 58	58	
P-59	Plant 59	59	
P-60	Plant 60	60	
P-61	Plant 61	61	
P-62	Plant 62	62	
P-63	Plant 63	63	
P-64	Plant 64	64	
P-65	Plant 65	65	
P-66	Plant 66	66	
P-67	Plant 67	67	
P-68	Plant 68	68	
P-69	Plant 69	69	
P-70	Plant 70	70	
P-71	Plant 71	71	
P-72	Plant 72	72	
P-73	Plant 73	73	
P-74	Plant 74	74	
P-75	Plant 75	75	
P-76	Plant 76	76	
P-77	Plant 77	77	
P-78	Plant 78	78	
P-79	Plant 79	79	
P-80	Plant 80	80	
P-81	Plant 81	81	
P-82	Plant 82	82	
P-83	Plant 83	83	
P-84	Plant 84	84	
P-85	Plant 85	85	
P-86	Plant 86	86	
P-87	Plant 87	87	
P-88	Plant 88	88	
P-89	Plant 89	89	
P-90	Plant 90	90	
P-91	Plant 91	91	
P-92	Plant 92	92	
P-93	Plant 93	93	
P-94	Plant 94	94	
P-95	Plant 95	95	
P-96	Plant 96	96	
P-97	Plant 97	97	
P-98	Plant 98	98	
P-99	Plant 99	99	
P-100	Plant 100	100	

PLAN - WATERFRONT 2 - AREA J



PLAN - WATERFRONT 3 - AREA K

DANIEL SHERMAN
LANDSCAPE ARCHITECT
4 BROADWAY SUITE 9
VALHALLA, NY 10595
PHONE: (914) 824-0999
FAX: (914) 824-0251

PROJECT:
EAGLE BAY

TOWN OF STONY POINT
ROCKLAND COUNTY, NEW YORK

TITLE:
LANDSCAPING PLAN
AREA 'J' & 'K' - CENTRAL WATERFRONT

DRAWN BY: AL
CHECKED BY: DMS
DATE: MAY 30, 2018
SCALE: 1" = 10' FT.
PROJECT NO.: 1407
DRAWING NO.: L-9

